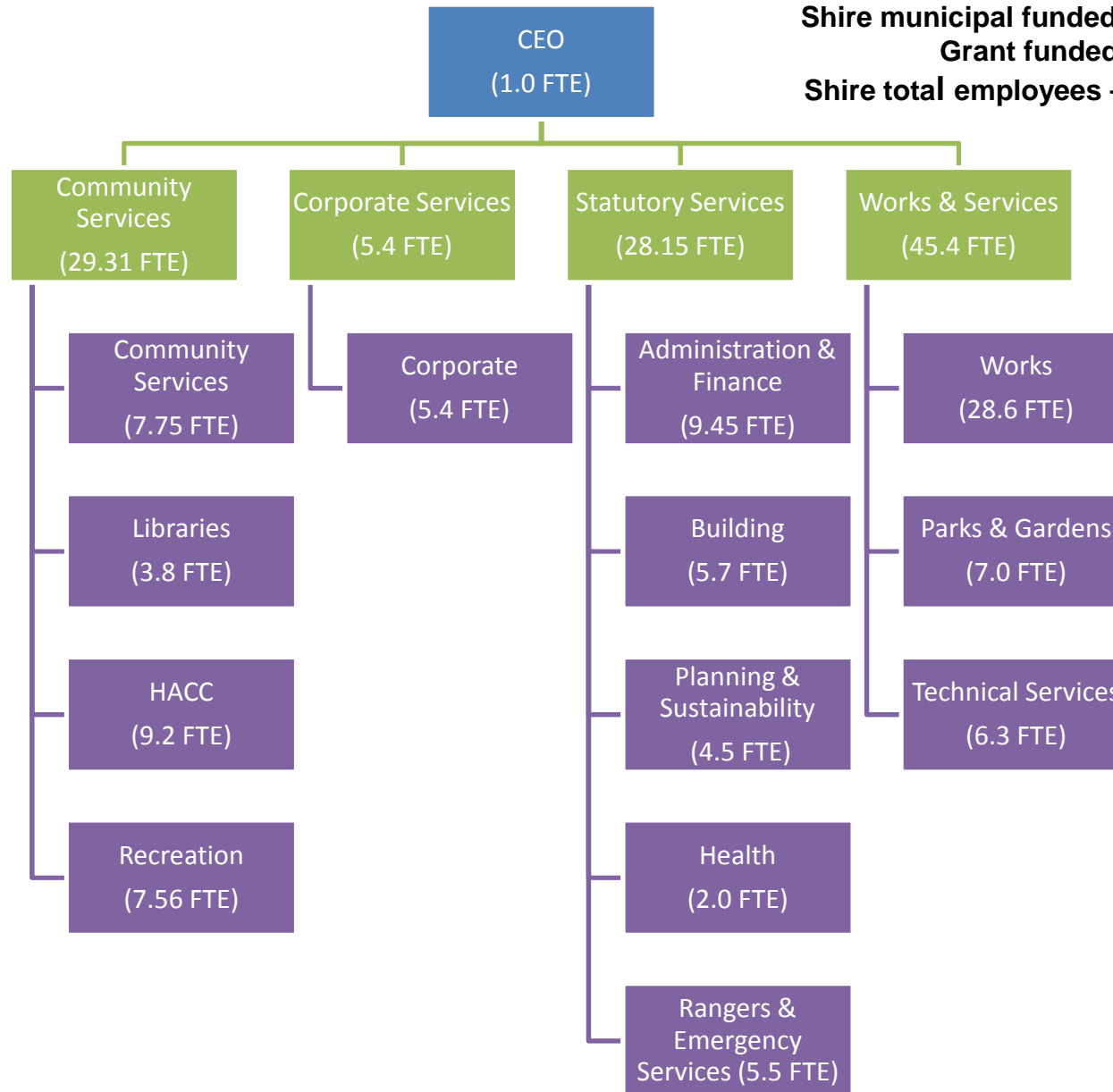




Shire municipal funded – 97.56 FTE
Grant funded – 11.70 FTE
Shire total employees – 109.26 FTE

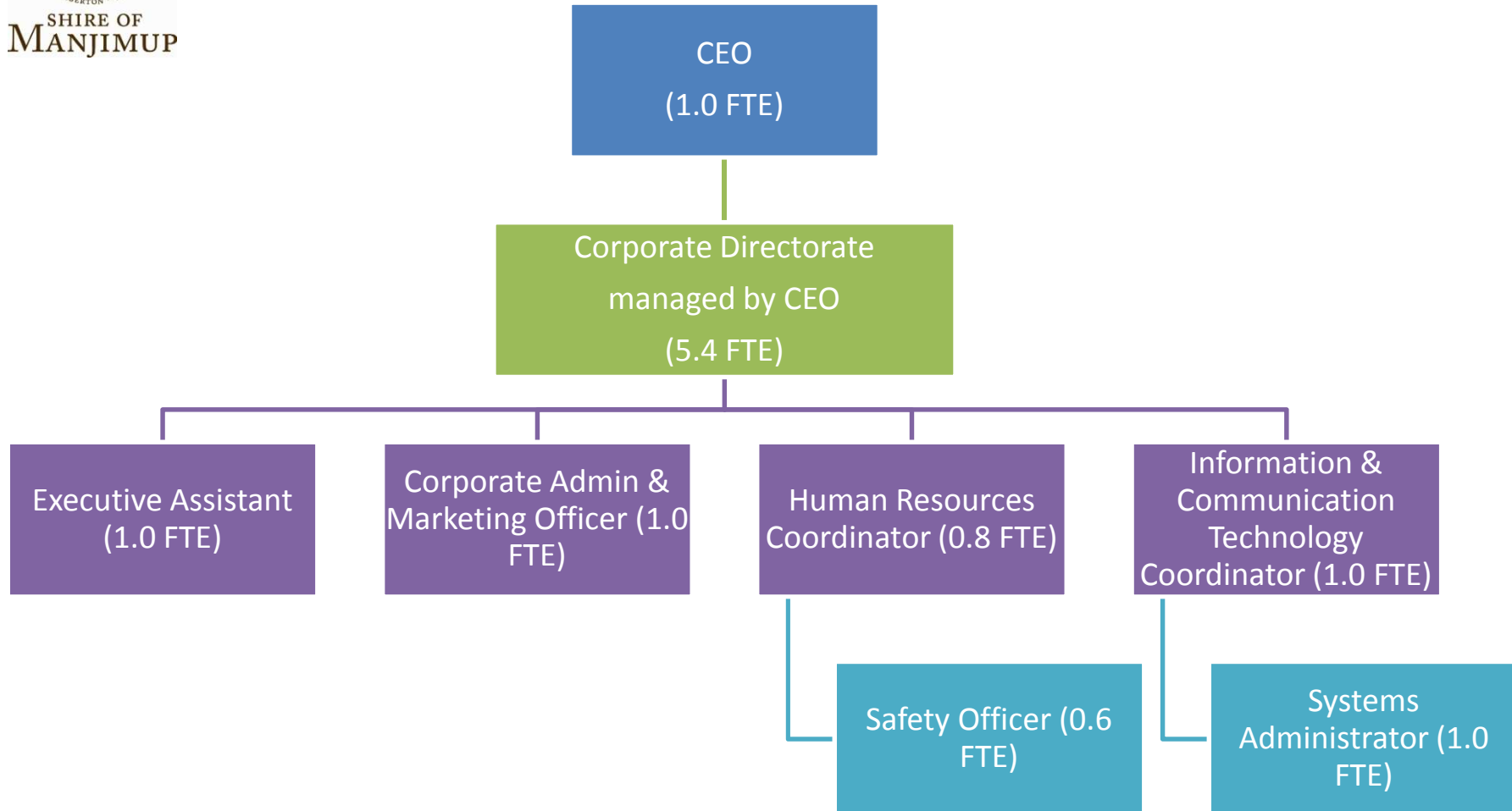
Directorates



Departments

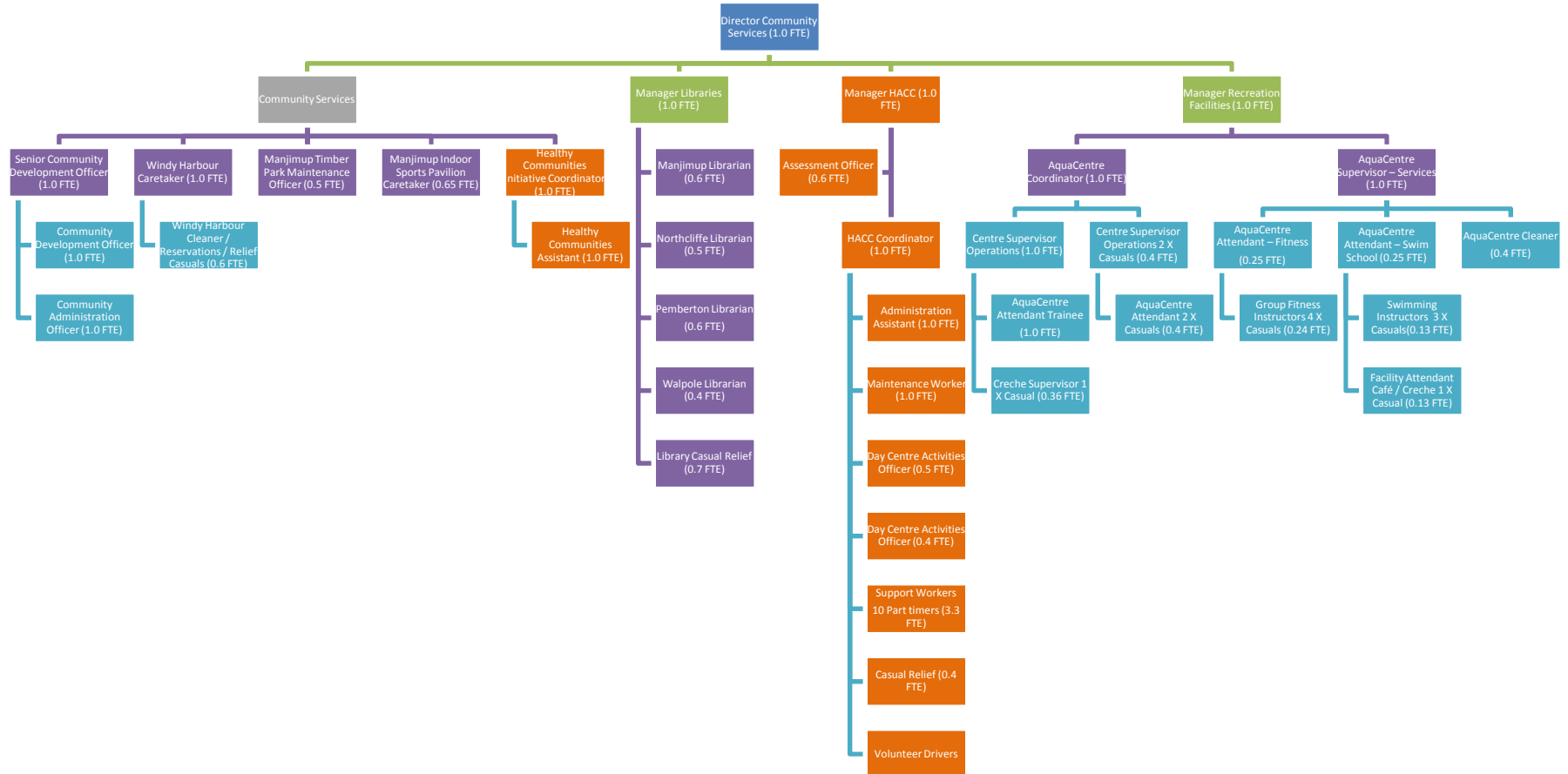


Corporate Services Directorate (6.4FTE)



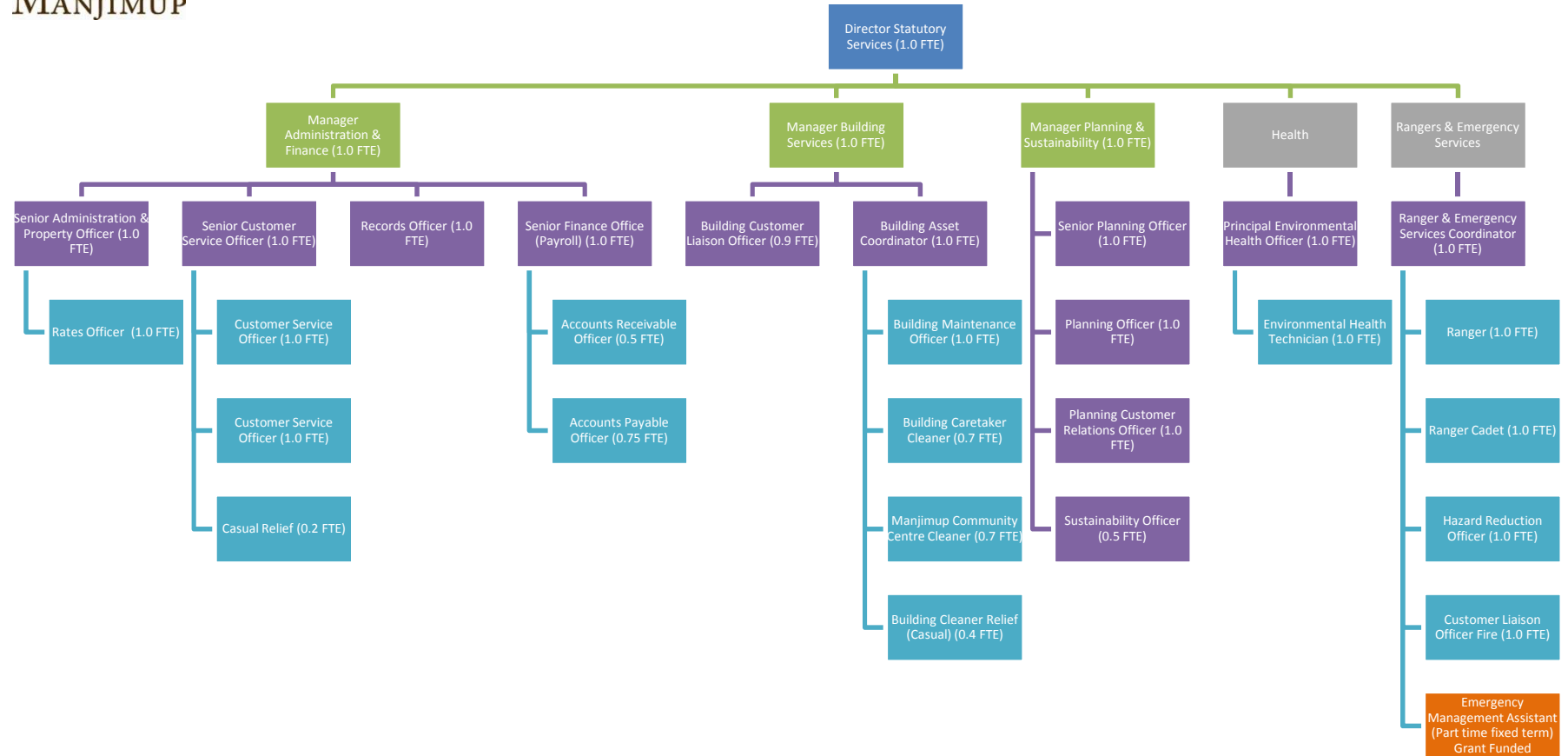


Community Services Directorate (29.31 FTE)





Statutory Services Directorate (28.15 FTE)





Works & Services Directorate (45.4 FTE)

