

Reviewed – March 2011

Shire of Manjimup
Community Safety Plan
July 2011 – June 2014

Review compiled by
Shire of Manjimup
Community Services
&
Members of the CS&CP Working Party Committee

Contents

SECTION ONE

1. Introduction to the Shire of Manjimup Regional Area	Page 5
2. A Brief History	Page 6
3. Executive Summary	Page 7
3.1 The community safety & crime prevention aims are:	Page 7
4. What is Community Safety?	Page 8
4.1 The notion of community safety reflects two key issues	Page 8
4.2 Community safety strategies involve activities & practices relating to:	Page 8
5. What is Crime Prevention?	Page 8
5.1 1 Two broad approaches inform the work of the crime prevention strategies	Page 8
6. Role of Local Government	Page 9
6.1 1 Benefits to Local Government of their involvement in crime prevention	Page 9
6.2 In order to reduce crime the following points should be remembered:	Page 9
7. Defining a Safe Community	Page 10
7.1 The Safe Communities Model	Page 10
7.2 This type of model has been very successful as:	Page 10
7.3 What is a Community Safety Plan? In Summary	Page 10
8. Creating a Safer Community	Page 11
8.1 Addressing local issues in the community:	Page 12

SECTION TWO

9. The Shire of Manjimup's 2008-09 State Crime Prevention Profile 19	Page 15
9.1 Recorded Crime	Page 15
9.2 Offence Counts	Page 15
9.3 Offence Rates	Page 16
9.4 Crime Trends	Page 17
9.5 Long Term Trends	Page 17
9.6 Unique Offenders Arrested	Page 18
9.7 Social Indicators	Page 19
10. The State Government's CS & CP Strategy	Page 21
10.1 The 5-Step Process of the State Strategy in a Nutshell:	Page 21
10.2 The 8 Principals in Preventing Crime:	Page 21
10.3 Five Key Goals & Strategy Priority Actions:	Page 22

SECTION THREE

11. The Shire of Manjimup's - Community Safety Plan 2011-2014	Page 24
11.1 Introduction	Page 24
11.2 This decision to review the Community Safety Plan was prompted by:	Page 24
11.3 Our Vision	Page 25
11.4 The Objective of the Combined CS&CP Working Party Committee	Page 25
11.5 The Role of Key Partners in CS&CP	Page 25

12. Community Consultation – “it’s a process”	Page 26
12.1 Principles & Implementation Approach:	Page 26
12.2 Implementation Approach:	Page 26
12.3 Methodology	Page 27
12.4.1 Five strategic roles in community safety	Page 27
12.4.2 Community safety shares similar health and wellbeing goals	Page 27
12.4.3 This safety plan may also be used as a tool for:	Page 28
12.4.4 Manjimup Shire’s ongoing roles relating to community safety	Page 28
13. Community Safety & Crime Prevention Issues Raised	Page 29
14. Key Result Areas – actions are outlined (Objectives 1 – 4)	Page 30
Objective 1: Safe streets & neighbourhoods within each of our towns	Page 30
Objective 2: Safe community behaviour & social support	Page 35
Objective 4: Community strengthening & partnerships	Page 36
CS&CP – Action Plan (Initiatives & Projects)	Page 40

SECTION FOUR

CS&CP ‘New Initiatives & Priority Projects (2011 – 2014)	Page 41-56
----------------------------------------------------------	------------

SECTION

1



1. INTRODUCTION TO THE SHIRE OF MANJIMUP REGIONAL AREA

The Shire of Manjimup, with a population of 10,022 (ABS 2010), is located within the Lower South West region of Western Australia. The Shire is 300km south of Perth, covers an area of over 7,028 sq km. The Shire of Manjimup encompasses some of the finest natural landscapes in Western Australia and includes vast areas of majestic forests and national parks which surrounds prime horticultural, agricultural and viticulture lands.

The Shire has more than 140km of pristine coastline with many significant tourism features and destinations. The district is considered one of the most desirable to visit in the Southwest including the towns of Manjimup, Pemberton, Northcliffe and Walpole together with the smaller communities of Palgarup, Deanmill, Jardee, Quinninup, Windy Harbour and 36 localities



The town of Manjimup itself is the main service centre for the region between Bunbury and Albany and provides a large range of lifestyle, community, education and support services

The Shire region has a TAFE College, one Senior High School, two private High Schools, two District High Schools, five Primary Schools, two private Primary Schools, two public hospitals, a regional indoor heated AquaCentre and extensive sporting and recreational facilities.

Brief Demographics Overview:

- Largest Shire in the South West (7,028 km²)
- Population of 9,995 (Estimated Resident Population as at 30 June 2008 – Australian Bureau of Statistics 3218.0 Regional Population Growth Australia 2007-08)
- 6,897 Electors (October 2009)
- 85% of the Shire is National Park or State Forest (600,000 hectares)
- Incorporates 4 towns & 5 settlements
- 40% of the State's potable water
- Low unemployment (4.2% December 2002)
- Agricultural production \$112m pa (98/99)
- Forest products \$140m pa (99)
- Largest orchard in WA (Casuarina Valley)
- 3rd largest wine region in WA at 13% of production (Margaret River 42% & Great Southern 20%)

- 140 km's of pristine coastline
- 40% of the world famous Bibbulmun Track
- Extensive road, rail, air and telecommunication infrastructure
- Temperate Climate
- Rainfall 1100mm annual average

2. A BRIEF HISTORY

The name Manjimup was derived from the aboriginal word "Manjin" – a special edible reed and "up" meaning meeting place. The area was first settled in 1856 near the present town site of Manjimup. The area has strong links with the timber industry and other industries include horticulture, agriculture, viticulture, dairying, aquaculture and tourism.

- The Shire area was first included in the Plantagenet Wellington and Sussex Road Districts in 1871 and at a later stage were included in the Nelson Road Board District.
- The Warren Road District was formed in 1908.
- In 1925, the Warren Road District name was changed to the Manjimup Road District.
- With the enactment of the Local Government Act 1960, the Manjimup Road District name was changed to the Shire of Manjimup effective from July 1961.



The Shire of Manjimup's population has remained relatively stable in recent years, however, prior to 2007 the population fluctuated significantly mainly due to the dairy and timber industries being restructured.

The Shire of Manjimup had an Estimated Resident Population of 10,022 on the 30 June 2008

Many local community characteristics are similar to those for the South West region. The town of Manjimup is a multicultural community with high levels of cultural and, linguistic diversity.

Manjimup has always been an area popular for its proximity to other larger regional centres with public transport accessible to Busselton (120km), Bunbury (136km), and Albany (250km).

Housing affordability as compared to other surrounding towns and Shire's within its vicinity make Manjimup an appealing place for new families to settle.

3. EXECUTIVE SUMMARY

In August 2005 the Shire of Manjimup entered into a partnership with the Office of Crime Prevention as part of a new State Government initiative for reducing crime and improving community safety. A Community Safety and Crime Prevention Plan was developed and implemented to highlight the research based issues in the community that needed to be addressed.

To ensure the Community Safety and Crime Prevention Plan 2011-2014 achieves outlined objectives a coordinated effort between the Shire of Manjimup, the whole of community, and relevant state government agencies must continue to provide for a safe environment for all and to implement strategies to prevent crime.

The Shire of Manjimup Community Safety & Crime Prevention Plan 2011-2014 will provide a documented structure for a range of strategies and provide for practical approaches to aid all stakeholders to develop and implement initiatives to advance a perception of a safer community over the next three years.

The Plan outlines the Local Priority Action schedule which has been derived through on-going community consultation by the local Community Safety & Crime Prevention committee representatives and forums involving officers from the Office of Crime Prevention, State Government Agencies and various community organisations.

As a result of an on-going consultation process and utilising local police statistics including the 2008-09 Community Safety and Crime Prevention Profile - crime statistics, long-term trends, and demographic information, the following priority issues were clearly identified.

1. **Alcohol and other Drugs**
2. **Road Safety**
3. **Youth Issues (Vandalism / Anti-social behaviour)**
4. **Family Support**

These four identified priority areas of concern will be the focus of the new initiative project plan which includes the implementation of various projects to address these issues. The focus will concentrate on:

- Resurrection of the local liquor accord
- Establishing an overarching Shire of Manjimup Alcohol Management Plan
- Implementation of Youth activities and programs to build capacity and resilience
- Sustain support for Road Safety education projects (RISK, Keys for Life, SDERA, PROBE)
- Incorporate Crime Prevention strategies Neighbourhood Watch, Eyes on the Street, Crimestoppers, Implement security surveillance measures at identified locations

3.1 The Community Safety & Crime Prevention Project aims are:

- To address community concerns in relation to safety & crime with program/ strategy implementation
- To continue to survey community attitudes and perceptions of crime within each town/district.
- To undertake an analysis of the data collected
- To develop a local Shire *Safety Plan* based on addressing those priority issues.

5. WHAT IS COMMUNITY SAFETY?

A safe community is one where people are able to pursue, and obtain, the fullest life possible without fear or hindrance from crime and disorder. The State *Community & Safety & Crime Prevention Strategy* refers to both people's feelings of safety (perception) as well as the actual level of safety as indicated by objective measures of crime and victimization.

The term *community safety* generally refers to a broad approach towards creating healthy environments and adopting crime prevention measures.

4.1 The notion of community safety reflects two key issues:

- (1) Real threats to safety and security;
- (2) Perceived threats to safety and security (which may not accord with any real threat but which nevertheless affects the quality of life in the community).

4.2 Community safety strategies involve activities and practices relating to:

- Direct reduction of criminal events;
- "Quality of life" issues, such as the fear of crime;
- Preventing or controlling hazards and conditions that lead to personal harm (intentional or unintentional injury) or fear of harm;
- Positive, active participation of, and partnerships between government, state organisations, non-government agencies and the wider community;
- Community safety issues are more often than not related to wider social, economical and community health problems (e.g. unemployment, abuse of alcohol & drugs and other substances);
- Initiatives at the local level to alleviate community anxiety over the incidence and perceptions of crime and anti-social behaviour.

5. What is Crime Prevention?

The Office of Crime Prevention defines crime prevention as:

"Any public or privately based initiative or policy aimed at reducing or eliminating criminal behaviour, violence and the fear of crime or violence in the community."

5.1 Two broad approaches inform the work of the crime prevention strategies:

1. Situational crime prevention reduces the risk of, and opportunities for, crime by the systematic management, design and manipulation of the immediate physical environment in which crime occurs or is likely to occur.
2. Social crime and violence prevention deals with the underlying motivational causes of criminal and antisocial behaviour and focuses on increasing social inclusion and promoting opportunities for law abiding behaviour

6. ROLE OF LOCAL GOVERNMENT

Local Government has a central role in promoting and developing strategies which enhance community safety and well-being³. The work of the Manjimup Shire Council as a support service provider, facilitator, planning regulator and strategic planner, means Council can play a central role in assisting with facilitating community safety projects within each of our four towns/areas (Walpole, Northcliffe–Windy Harbour, Pemberton & Quinninup–Manjimup) which bring together Local and State Governments, police, emergency services, public health authorities, schools, local groups and networks in the community and private sector.

Local Government also has a responsibility to its local communities and the quality of life issues that impact on residents. The increasing concerns with community safety has been the catalyst for a number of local authorities employing Community Safety Officer's to assist local working party committees' and to act as the liaison with Shire Council on various issues.

It is the perception of State Government that, as the tier of Government closest to the community, local government is well placed to assist *Community Safety & Crime Prevention* partnerships by facilitating the development of a local plan and 'housing' the plan on behalf of the local community.

6.1 Benefits to Local Government of their involvement in crime prevention include:

- Cost-effectiveness, the cost often associated with crimes such as vandalism and damage to Council property will be lessened;
- Opportunities to build co-operative relationships with State Government agencies including the WA Police Service and the establishment of new links to sectors with which Local Government might not usually interact; and
- Representation of each local community's crime and safety concerns.

6.2 In order to reduce crime the following points should be remembered:

- The Police alone cannot control crime and disorder.
- No single agency can control crime and disorder.
- Agencies with a contribution to reducing crime and disorder need to work in partnership.
- Evidence-based problem solving approaches promise the most effective approach to reducing crime and disorder.
- Problems of crime and disorder are complex, and there are therefore no quick solutions.
- Crime and disorder problems need to be understood in their local contexts and strategies thus need to be tailored locally.
- The CS&CP Working Party Committee have outlined the following basic principles for crime prevention strategies within the Manjimup Shire:
- The social, economic and family environments of young people influence the potential for development of antisocial and/or criminal behaviour.

- Links exist between school achievement, joblessness and criminal behaviour.
- Strategies should be based on knowledge about crime problems using current tools, such as statistical analysis, research, and evaluation.
- Support for children, families, and young people can prevent the development of anti-social and offending behaviours.
- The risk of crime is increased in communities that do not include a heterogeneous mix of families, young people and older people, and where there are few meaningful opportunities for employment and recreation.
- Partnerships between government agencies, business and community organisations are vital for ensuring links between crime prevention initiatives.
- Evidence indicates that community or social crime prevention programs that aim to change the social conditions which influence offending is cost-effective approaches to crime prevention.
- Criminal behaviour is often opportunistic in nature and influenced by the immediate situation and physical environment.

7. DEFINING A SAFE COMMUNITY

Community Safety & Crime Prevention is a community driven initiative designed to promote local community safety & crime reduction through preventative means.

7.1 The Safe Communities Model:

- Offers an approach to the promotion of local ownership of community safety.
- It creates an infrastructure in local communities for addressing *Community Safety & Crime Prevention* (CS&CP) initiatives through the building of local partnerships.
- Communities build relationships to target safety & crime related priority issues that are of significance in their local area and then organise solutions to address these priority issues.

7.2 This type of model has been very successful as:

- A community defines its own problems and identifies solutions to these problems;
- Efforts towards crime prevention & safety promotion are co-ordinated at a local level (e.g. facilitated by the Shire of Manjimup, but co-ordinated the local CS&CP Working Party Committee);
- It raises public awareness about the importance of protecting people in local communities;
- It ensures that community interest groups play a part and support any crime prevention or community safety projects
- It creatively mobilises local community members to action, not apathy.

Safe Communities is a concept that recognises general community safety as: "**a universal concern and a responsibility for all.**"

This co-operative approach to crime prevention makes the community safe by encouraging greater co-operation and collaboration between different levels of the business sector and government agencies, together with a high level of local community consultation, local community leadership and input into our *Community Safety Plan*.

7.3 What is a Community Safety Plan: In Summary

1. An infrastructure based on partnership and collaborations, governed by a cross-sectional group that is responsible for CS&CP promotion within their community.
2. Long-term, sustainable programs covering both local and regional areas, covering all ages, environments and situations.
3. Programs that target high-risk groups and environments, and programs that promotes safety for vulnerable groups (e.g. 'at-risk' youth, victims of Domestic Violence, isolated towns etc.).
4. Programs that address the frequency and causes of repeat crime in an area.
5. Evaluation measures to assess their programs, processes and the effects of these changes.
6. Ongoing participation in State and National *Community Safety & Crime Prevention* grants funding opportunities.

8. CREATING A SAFER COMMUNITY

Crime and the fear of crime consistently rate amongst the highest concerns of the Australian community. Every crime hurts more than just the victims. Direct costs include Police attendance, prosecution and hospital expenses while the indirect costs include lost productivity for the victims and perhaps the family as well.⁴

The Australian Institute of Criminology has estimated that crime costs the Australian community around \$32 billion per year⁵ or which equates to \$1,600 per person per year (2003)⁵. This included the direct cost of replacing what was stolen or injury costs due to assault, as well as other costs, such as victim assistance, the criminal justice system, security, lost productivity of prisoners and insurance costs.

Unreported crime, or 'dark rate of crime' as it has been called, is often much higher than that which is actually reported to the Police.⁶ For example, the Australian Bureau of Statistics estimates that in WA only four-fifths of burglaries, one-quarter of attempted break-ins and only one-third of assaults are actually reported to the Police.⁷

⁴RAC Live Safe Guardian, WA. January Edition (2007).

⁵Pat Mayhew & Glenda Adkins, Counting the Costs of Crime in Australia, Trends and Issues in Crime and Criminal Justice No. 247, Australian Institute of Criminology (2003).

⁶Reported Crime Statistics – www.police.wa.gov.au

⁷RAC LiveSafe Guardian, WA. January Edition (2007).

8.1 Addressing Local Issues in the Community:

Creating a safer community is about addressing local community issues regarding safety and crime. Safer communities are communities which are dealing concretely with issues of crime; with building healthy relationships among residents, authority figures and businesses; with minimising the fear of crime; and with enhancing community participation and public life⁸. Concern about crime in Australian cities has been linked to external factors such as increasing globalisation, long-term unemployment, job insecurity and uncertainty following rapid technological, economic and social change⁹. A number of other factors such as gender, age and previous experience as a victim have also been linked to fear of crime; however any relationships between factors should be viewed with caution¹⁰.

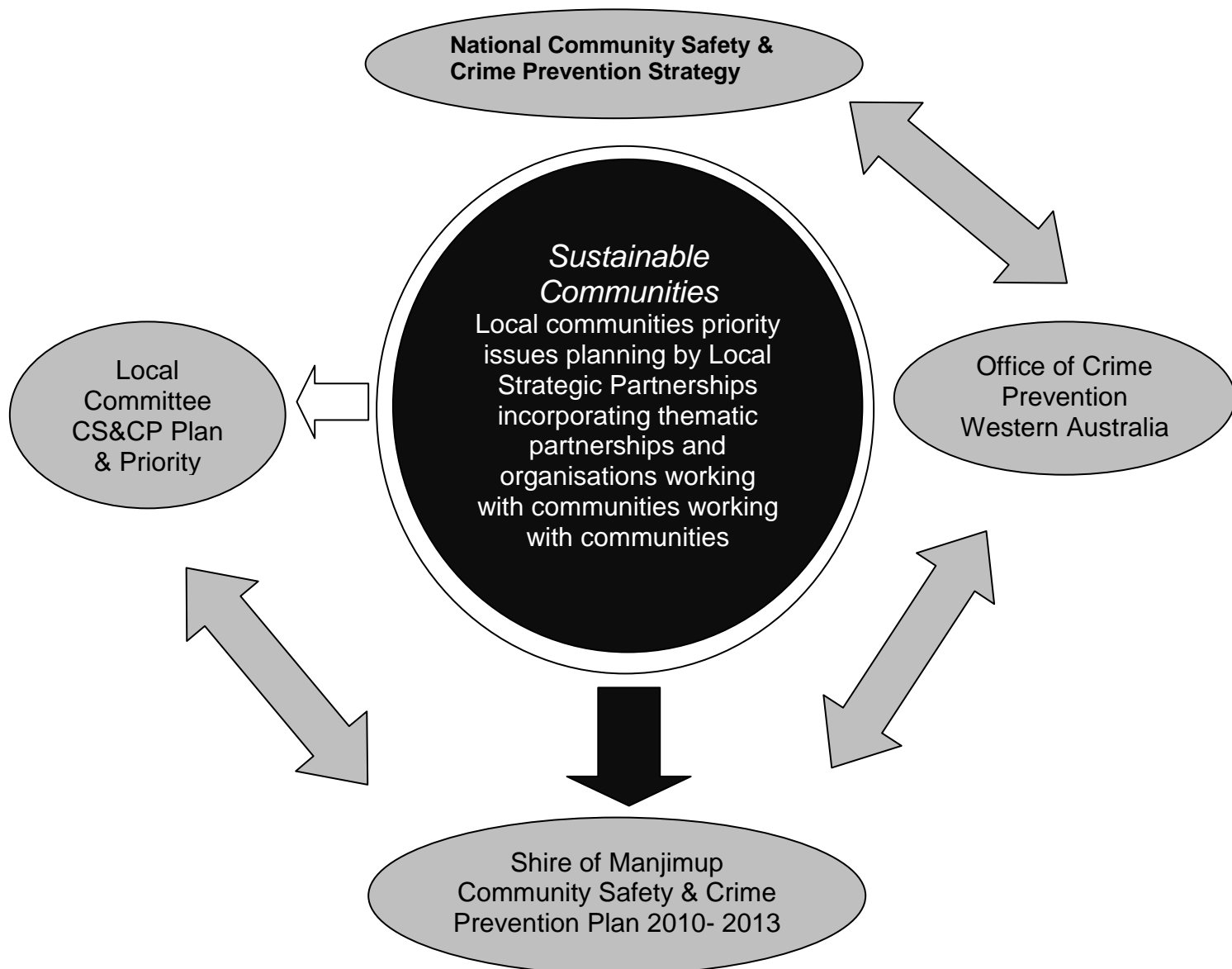


Diagram 1 Sustainable Communities: Creating a Safer Community

8 White & Coventry, (2000).

9 Collins, Noble, Poynting & Tabar, (2000).¹⁰ Graboski, (1995).

10 Graboski (1995)

Environmental considerations such as physical and social aspects of a community or a small town have also been found to be related to fear of crime, while the presence of sociable neighbours can help reduce feelings of fear. The media play a significant role in informing and shaping popular perceptions of crime¹¹.

For many, knowledge about crime within a community comes as second-hand knowledge through sources such as newspapers, local town newsletters, local regional television or radio broadcasts.

Many factors appear to influence peoples' *perceptions* of community safety in public spaces. Built and environmental factors such as light, open spaces, clear sight lines and the ability to seek refuge are well documented as key elements in determining how a person perceives the safety of an area.

Social factors also play a role and are often a strong determinant of how people will judge an area¹².

The Shire of Manjimup, Police authorities, service providers, each town/community, community groups, youth groups and general community members each have an important role to play in promoting and developing local priority projects and strategies to address the issues that enhances community safety and wellbeing (see Diagram 1).

11 Drugs & Crime Prevention Committee, (2001)

12 Pat Mayhew & Glenda Adkins, Counting the Costs of Crime in Australia, Trends and Issues in Crime and Criminal Justice No. 247, Australian Institute of Criminology (2003).

SECTION

2

9. The Shire of Manjimup's 2009 State Crime Prevention Profile

This *Community Safety & Crime Prevention Profile* is one of a series of Profiles designed for use in the partnerships developing local safety and crime prevention plans in communities across Western Australia.

The purpose of these Profiles is to ensure that all local plans are based on reliable evidence. This Profile provides essential background information for planning to prevent crime in the Shire of Manjimup and make the community a safer place. It includes data on crime in the area, comparisons with the South West region and the state, and trends over time.

To help understand the local context for these crime statistics, the Profile has other relevant information about the makeup of the local community and how local community characteristics compare with the South West region and the whole state. The Profile has been prepared for the *Office of Crime Prevention* by the Crime Research Centre.

For the purposes of the **Shire of Manjimup: Community Safety Plan 2011- 2014**, the following **2008-09 Profile** information is a snap-shot of information relevant to this report.

9.1 Recorded Crime

The *Recorded Crime* table documents the number of offences recorded in Manjimup in 2008-09, and the proportion that each offence category contributes to total recorded crime.

Users can determine which offences are most common, and how the pattern of offences differs across the regions.

In Manjimup a total of 966 offences were recorded in 2008-09, 3.1% less than in 2007-08. The most commonly recorded offences were other theft (i.e. other than motor vehicle) with 16.8% of the total, property damage (16.0%), possession or use of illicit drugs (7.2%).

9.2 Offence Counts

The *Recorded Crime* table shows the number of offences recorded in the Shire of Manjimup in 2009-09 and the proportion of total recorded crime that each offence category contributes. It shows which offences are most common, for example, and compares the Local Government with its region and the state.

The statistical information on crime in this Profile is based on the most up-to-date, validated and value-added annual crime data available in Western Australia. It is not meant to be a snap-shot of the most current statistics, but is designed to place recent local crime data within the wider picture of the trends and averages of the region and state. The most current statistics can be obtained from the WA Police website: www.police.wa.gov.au

In the Shire of Manjimup, the most commonly recorded offences were other theft (16.8%), property damage (16%), drug possession (7.2%) and non-residential burglary (4%)

Compared with the region and the state, offences against the person, residential burglary, motor vehicle theft accounted for smaller proportions of all offences in the Manjimup Shire, while non-residential burglary, aggravated sexual assaults, other theft and drug offences accounted for larger proportions.

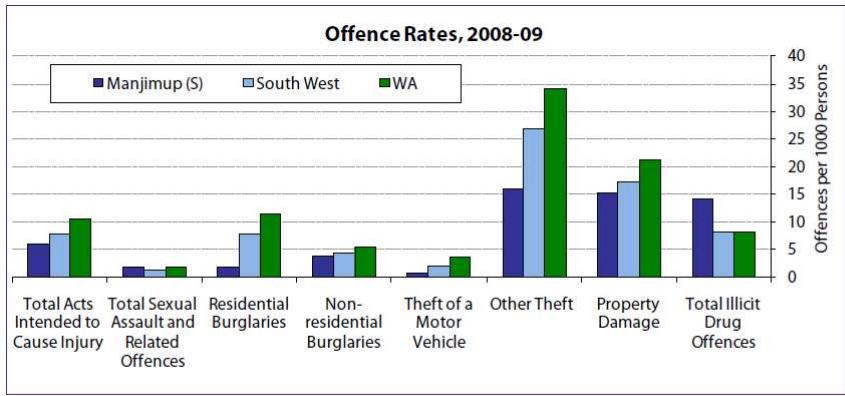
**RECORDED CRIME IN THE SHIRE OF MANJIMUP,
2008–09**

Manjimup (S)			South West %	Western Australia %
Offence	Number	%		
Aggravated assault	12	1.2	2.0	2.5
Non-aggravated assault	49	5.1	5.3	5.2
Aggravated sexual assault	17	1.8	1.1	1.0
Residential burglary	18	1.9	7.4	8.4
Non-residential burglary	40	4.1	4.2	3.9
Motor vehicle theft	8	0.8	2.0	2.5
Other theft	162	16.8	25.4	25.0
Property damage	155	16.0	16.4	15.7
(a)				
Drugs deal or traffic	- 10	1.0	0.8	0.6
Drugs possess or use	- 70	7.2	3.7	3.3
Other offences	403	44.1	31.7	31.9
(b)				
Total	966	100.0	100.0	100.0

9.3 Offence Rates

The *Offence Rates* chart documents the levels of recorded crime in Manjimup in 2008-09 relative to its population, providing a better indicator than raw offence counts when comparing local crime levels with regional and state crime levels.

In Manjimup, rates of recorded crime were lower in most offence categories than in the South West SD and Western Australia. Offences recording the highest rates were other theft (15.9 offences per 1,000 residents), property damage (15.3) and illicit drug offences



Sources: Western Australia Police Monthly Recorded Crime: ABS Cat no 3235.0

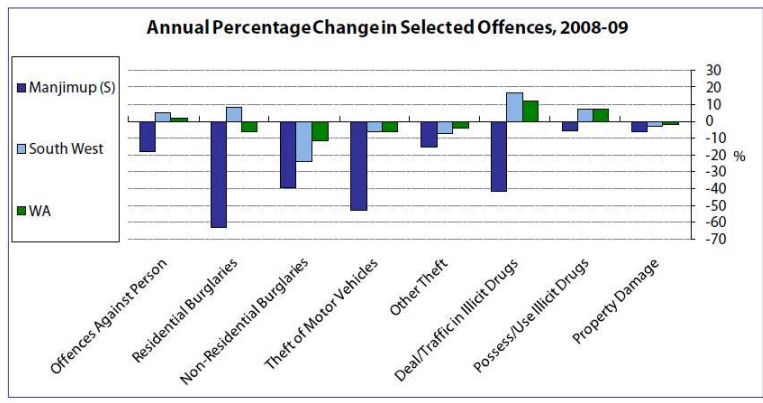
9.4 Crime Trends

Changes in recorded crime levels in Manjimup between 2007-08 and 2008-09 are documented in the *Annual Percentage Change* chart below. It includes recorded crime levels for the South Western SD and Western Australia for comparison.

‘Offences against the person’ includes the following offence categories: murder, attempted murder, manslaughter, aggravated sexual assault, non-aggravated sexual assault, aggravated assault, non-aggravated assault, threatening behaviour, deprivation of liberty, aggravated robbery, and non-aggravated robbery.

In 2008-09 Manjimup recorded a 3.1% decrease in total offences, with residential burglaries (down 62.5% or 30 offences) and motor vehicle theft (down 52.9% or 9 offences) recording the largest percentage decreases. None of the selected offences recorded percentage increases.

2

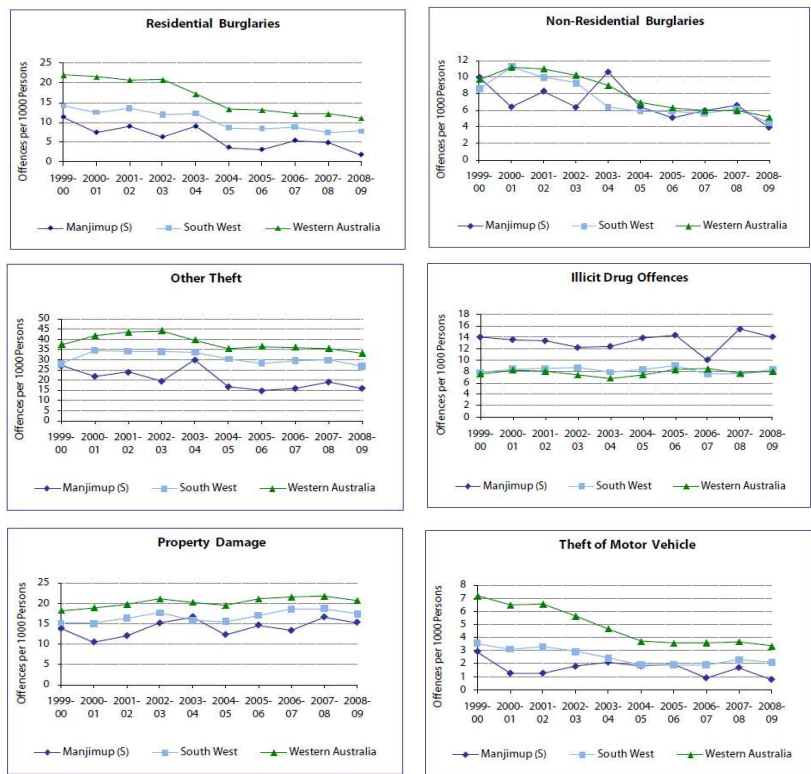


Source: Western Australia Police Monthly Recorded Crime

9.5 Long Term Trends

The charts on this page show the annual crime rates per 1,000 persons since 1999 -2000 for Manjimup using Western Australia Police Monthly Crime and ABS Estimated Resident Population data. Regional and state crime rates are provided for comparison.

Since 1999-2000 Manjimup has usually recorded lower crime rates than the South West SD and Western Australia across all offence categories with the exception of illicit drug offences. Rates of offences against the person in Manjimup have been increasing over a period while residential burglaries have been falling.

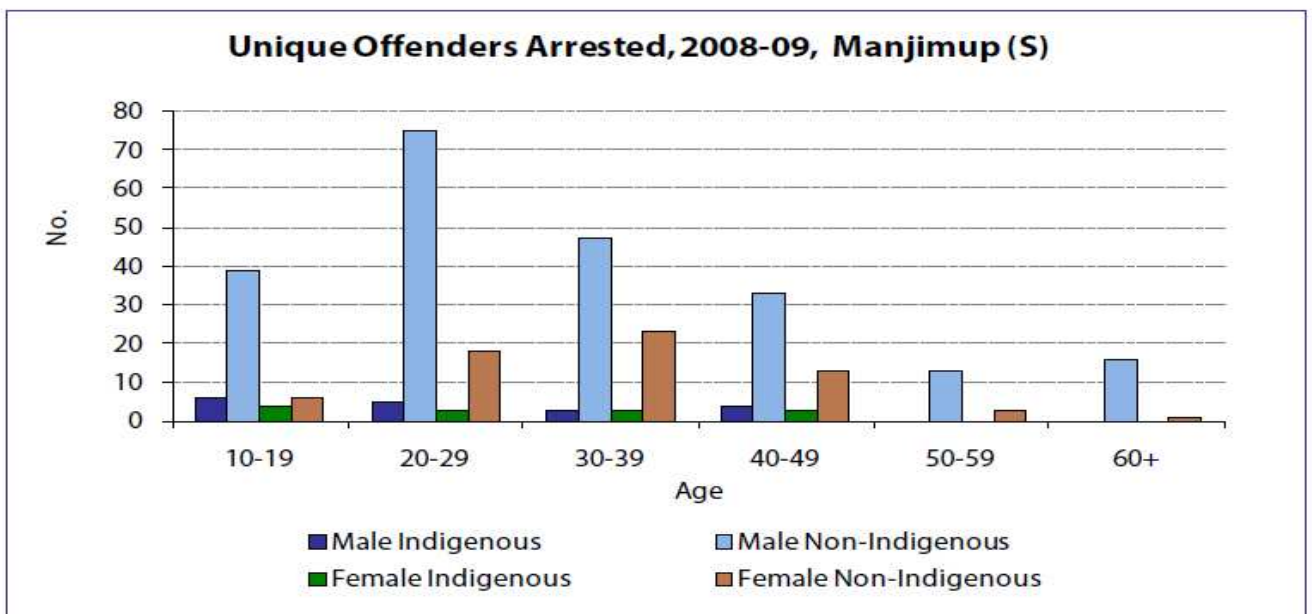


9.6 Unique Offenders Arrested

The chart below shows the number of unique offenders arrested in Manjimup in 2008-09, by age, group, gender and indigenous status.

In 2008-09, a total of 323 people were arrested in Manjimup, with the age, sex and Indigenous status being recorded for 318 offenders. Of these, there were more male offenders (241 persons or 75.8%) than female offenders (77 or 24.2%) and more non Indigenous (287 or 90.3%) than Indigenous offenders (31 or 9.7%).

Non – Indigenous males aged 20-29 years (75 or 23.6%) made up the highest proportion of unique offenders arrested in the Shire during 2008-09



Source: Western Australia Police Monthly Recorded Crime

9.7 Social Indicators

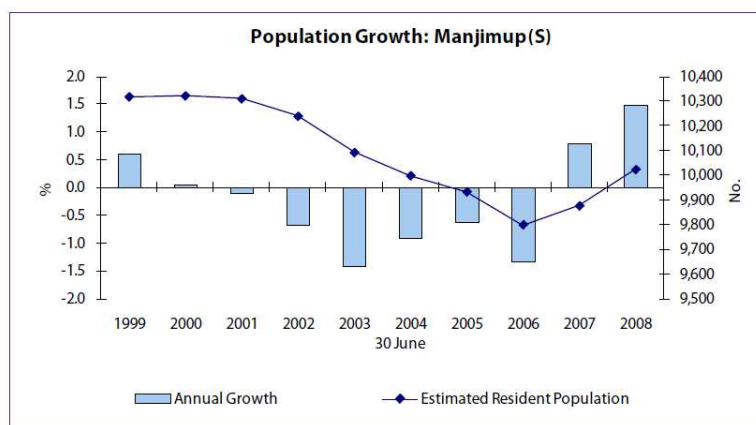
9.7.1 Population

The Shire of Manjimup is situated on the south west coast of Western Australia in the South West Regional Development region. It is **rated as 'Remote Australia'** under the Australian Census classification of remoteness¹⁶.

The Shire of Manjimup had an Estimated Resident Population of 10,022 on June 30 2008. The median age of the Manjimup's population was 39.6 years, equal to that of the South West Statistical Division (SD) but above that for Western Australia (36.3). There were 103.5 males to every 100 females in the Shire's population, a ration higher than both the South West SD and Western Australia.

At Census 2006, Indigenous persons accounted for 2.5% of Manjimup's population, a higher proportion than in the South West SD (1.8%) and lower than Western Australia (3.0%). Over half of Manjimup's Indigenous population were under 18 years of age (55.4%) higher than the South West SD (48.4%) and Western Australia (47.7%)

Manjimup recorded an average household size of 2.6 persons on Census night 2006, higher than the South West SD and Western Australia (both 2.5%).



Source: ABS Cat. nos 3218.0 and 3235.0

Mobility indicators from 2006 Census showed that 38.2% of Manjimup' population had changed address in the previous five years, a lower proportion than in the South West SD (48.0%) and Western Australia (44.4%).

Remoteness

The remoteness classification comprises five categories, each of which identifies a region in Australia having a particular degree of remoteness. The categories are 'Major cities of Australia', 'Inner regional Australia', 'Outer regional Australia', 'Remote Australia' and 'Very remote Australia'. The remoteness classification of a region is calculated using the Accessibility/Remoteness Index of Australia (ARIA) of its constituent census collection districts. The degree of remoteness of each Local Government was determined by the remoteness classification of the region in which it lies. The Shire of Manjimup is rated as 'Remote Australia' under the Australian Census classification of remoteness.

The Australian Bureau of Statistics draws attention to the fact that the census night population may be the best population estimate for areas with high numbers of 'fly-in, fly-out' workers and temporary contract workers. However, the Estimated Resident Population is taken as the official government population estimate. 18 Australian Bureau of Statistics website: www.abs.gov.au (2006)

9.7.2 Socio-economic data (points of interest)

This section provides an overview of the socio-economic factors which affect Manjimup, including family status, housing tenure, income, education, and employment.

- A higher proportion of usual residents who left school before year 12 (59.8%)
- A higher proportion of households in public housing (4.0%)
- A lower proportion of single parent families (13.0%); and
- A higher proportion of households without a motor vehicle (6.2%) than the South West SD

Manjimup recorded a lower percentage of working-age residents earning weekly incomes of \$1000 or more (12.3%) than the South West SD and Western Australia. It also had a higher proportion of residents earning less than \$400 per week (45.9%).

The Socio –Economic Indexes for Areas (SEIFA) are a set of four indexes designed to allow ranking of regions in terms of relative social economic well-being. The national mean score of the SEIFA index of relative socio-economic disadvantage is 1,000. With a score of 960, Manjimup is relatively disadvantaged compared to other Local Government Areas (LGAs) in Australia and was ranked 36 out of the 142 LGAs in Western Australia at the time of the Census.

10. The State Governments Community Safety and Crime Prevention Strategy

In preventing crime, the State Governments vision is to make Western Australian communities safer through targeted and coordinated crime prevention and crime reduction programs.

10.1 The 5-Step Process of the State's CS&CP Strategy in a Nutshell:

Step 1 – Community Safety & Crime Prevention Partnership Agreements

The Manjimup Shire signed a *Community Safety & Crime Prevention Partnership Agreement* with the Minister for Community Safety (on behalf of the State Government) and received funding from the *Office of Crime Prevention* to develop a formal Community Safety and Crime Prevention Plan.

Step 2 – Community Safety & Crime Prevention Committee's

A *Community Safety & Crime Prevention Committee* was established to oversee the development, implementation and evaluation of the community safety and crime prevention planning process.

Step 3 – Research, Evidence & Public Consultation

Research was conducted and evidence collected to identify and prioritise local community safety and crime prevention issues of concern. Extensive public consultation was undertaken in each town to present research and evidence and through this consultation process, strategies to address issues of concern are identified. The emphasis here is on *local issues* and *local solutions* within each town.

Step 4 – Community Safety & Crime Prevention Plans

Through the consultation process a *Community Safety & Crime Prevention Plan* was developed and presented to the Office of Crime Prevention for endorsement.

Once endorsed further funding from the Office of Crime Prevention is made available to assist the Manjimup Shire to implement the Plan.

¹⁹ Information from these profiles is not tabulated here; however the regional drug use indicators may be viewed at www.dao.health.wa.gov.au/index.cfm?section=pubs&page=indicators

Step 5 – Implementation & Review

The *Community Safety & Crime Prevention Plan* is implemented with processes in place to ensure continual monitoring, reporting and evaluations.

Partnerships between Communities, Local Government, Police and other Government agencies will develop and implement local *Community Safety & Crime Prevention Plans*. These Partnerships will consult widely to identify priority issues and find local solutions.

10.2 The 8 Principles in Preventing Crime are:

- Sustainability
- Focus on results
- Inclusiveness
- Targeted efforts
- Working better together
- Sharing knowledge
- Evidence-based decision making
- Local solutions for local issues

Community Safety Plans are the key to a more strategic approach to crime prevention and community safety at the local level. They help to identify the priority issues that -impact on community safety and crime prevention in their local area and they set out 'what' needs to be done. They also identify who will be responsible for what.

10.3 Five Key Goals & Strategy Priority Actions:

Five key goals areas have been identified as the focus of the State Government's Strategic Plan in preventing crime:

Goal 1: Supporting Families, Children & Young People

Goal 2: Strengthening Communities & Revitalizing Neighbourhoods

Goal 3: Targeting Priority Offences

Goal 4: Reducing Repeat Offending

Goal 5: Designing Out Crime & Using Technology

The partners will monitor and evaluate the outcomes of the plan and report progress to the State Community Safety & Crime Prevention Council. Benefits of Partnership include:

- The opportunity to contribute to local planning and actions;
- The opportunity to build stronger alliances and networks;
- Increased access to funds for community safety and crime prevention;
- Access to training, workshops, conferences and forums; and
- Access to support from the Office of Crime Prevention.

Partnerships will be facilitated by local government with a wide range of agencies, organisations and groups involved. The aim is to be as inclusive as possible with local communities, businesses, young people, ethnic community groups, older people, people with disabilities, other community organisations and community volunteers all taking part. Local Government is best placed to lead the Partnerships, engage the community and facilitate the local planning process. However, while Local Governments can lead the engagement with the community, they will not be expected to do it alone. Improving community safety and preventing crime is everyone's responsibility.

SECTION

3

11. Shire of Manjimup's – Community Safety Plan 2011–2014

The *Shire of Manjimup Community Safety Plan 2011-2014* is Council's key policy recommendation document providing strategic direction for Council to address community safety & crime prevention priority projects within the Manjimup Shire.

11.1 Introduction

In 2010/11 the Shire of Manjimup reviewed its *Community Safety Plan* to guide its future role in community safety & crime prevention within each community represented within the Shire.

Community Safety & Crime Prevention Partnerships bring together communities, Local Government and State Government agencies to identify community safety and crime prevention issues and ways to address them.

While everyone is encouraged to participate, local government is often best place to lead and coordinate the *CS&CP Partnership* process.

11.2 The review process of the *Community Safety Plan* was prompted by:

- Council's on-going concern about current community safety & crime issues, and behavioural issues associated with the safety and welfare of all constituents living within the Shire of Manjimup's boundaries;
- The Crime & Safety profile and statistics (Office of Crime Prevention, WA) of both the Shire of Manjimup district and the South West region; and
- Reinforcement of current strategies & findings of Council's published documents including the Strategic Plan 2010 -2020 "The Road Ahead" and the Youth Policy & Strategy 2002-2006, both of which identified safety concerns.

Over the next 3 years, the *Community Safety & Crime Prevention (CS&CP) Working Party Committee in partnership with all stakeholders* will work to implement a series of programs and strategies for the Shire region from within the *Community Safety Plan*.

The Plan provides a guide for Council to address community safety issues through a range of initiatives, partnerships and local community groups implementing their "priority issues projects".

The combined efforts of the CS&CP Working committee and other stakeholders will include overall community health and wellbeing initiatives within each of the four (4) towns/areas within the Shire.

The focus of the reviewed plan 2011-2014 focuses on improving Council's role around building community capacity within each town, supporting local groups and community services, developing partnerships, advocacy, promotion and achieving identified outcomes in each of the **priority projects** identified within the *Shire of Manjimup Reviewed Community Safety Plan 2011-2014*

11.3 Our Vision

The vision for our *Community Safety Plan* is around continuously improving community confidence to access and participate in all aspects of life at all times of the day. Simply responding to crime is not enough; the community wants to see crime prevented from

happening in the first place. This is a challenge that the Shire Council cannot meet on its own, requiring the whole of the community to take up the challenge with us.

11.4 The Objective of the Combined CS&CP Working Party Committee

The objective of the *Shire of Manjimup Community Safety Plan 2011 -2014* is: “to continue to identify relevant local community priority issues, and develop an integrated approach to responding to community safety.”

The CS&CP Working Party Committee will continue working towards developing priority projects, in consultation with local members achieving outcomes and encouraging public feedback. Our goal is to address real issues that have the potential to change the community’s perception of *real and perceived* fear in relation to community safety and crime issues in their town.

11.5 The Role of Key Partners in CS&CP

Although this is a whole of Shire *Community Safety Plan*, it is not confined to action by local government alone. Indeed, it is a way of working on community safety, with much closer collaboration between community agencies, community members, local government and our other State Government partners (e.g. Police, DCD, DAO, OCP.) at each local level in the setting of priorities and the development of new policies and initiatives.

In particular, while the Police authorities clearly have a key role to play in delivering community safety & crime prevention; this is a task they share with many others, as the later sections of this *Community Safety Plan* will demonstrate.

Partnerships working between local authorities and other key agencies with responsibility for policing, fire & emergency services, social services, community development, risk management, community health, education & training and other valuable community services are all equally as important. **This Plan is a working document** and will be reviewed as required.

The Shire of Manjimup CS&CP Working Party Committee’s will continue to develop a collaborative alliance to further engage local agencies and community services.

Projects are being developed, via **Local Strategic Partnerships**, which strongly reinforce this approach by encouraging collaborative thinking around agreed priorities, and how these might be delivered in each town within the Shire of Manjimup. Together, we can make a collective difference to the communities in which we live.

The Shire of Manjimup and the *Office of Crime Prevention* community grants, bring related funding streams together for use on agreed priorities, and harness the energies of the voluntary members and community agencies sector and other local partners.

Developing capable **partnerships at the local level** is also vital in ensuring the sustainability of community policing and community priority projects being addressed within each town.

The Shire of Manjimup is also the regions key broker between the *Office of Crime Prevention*, Government policy and local delivery on the ground.

In cooperation with the local CS&CP Working Committee implement and influence local community groups and individual members’ initiatives and priority projects, and have a lead role in encouraging better performance by local partnerships, which also helps the Manjimup Shire

Council to better understand and support local issues.

12. Community Consultation – “it’s a process”

The goal is to facilitate open forums within the four town centres of the Shire of Manjimup where community representatives have an opportunity to present their views on issues that may be associated with the identified priority projects.

12.1 Principles & Implementation Approach:

The Shire of Manjimup Community Safety Plan is underpinned by the following principles:

- **Encouraging & supporting** – all positive health & wellbeing and safety activities in our community;
- **Community strengthening** – increasing capability of local communities to develop appropriate local responses to local issues;
- **Leveraging programs** – in collaboration and partnership with other government, internal and local agencies, to build on and value-add to existing programs and to facilitate the development of new projects;
- **Promoting safe communities cultures** – a shared set of beliefs, attitudes, values and ways of behaving that support the prevention of injury and crime; and
- **Safe environments** – the social and physical surroundings or conditions that support the prevention of injury and crime. Creating safe environments means creating the socio cultural circumstances in which people can feel safe and well as developing safer physical environments. It also means providing

12.2 Implementation Approach:

The *Community Safety Plan* will continue to be implemented for a further three years using the approach that encompasses:

- Being proactive & strategic
- Setting clear goals
- Setting realistic expectations for future activities
- Value-adding to existing programs & local community initiatives
- Continuing to support existing services & programs that minimise harm & offer support.
- Evaluating the progress of the *Shire of Manjimup’s Community Safety Plan* actions and priority projects on an annual basis

The effectiveness of the *Community Safety Plan* will be measured by the performance indicators identified under each key performance area.

12.3 Methodology

This *Community Safety Plan* has had the input and review of Council Officers responsible for business units to check detail and strategic information. Further consultation with the *CS&CP Working Party Committee’s*, reference groups, community network groups, local Police and various stakeholders has been undertaken to further identify local issues within each town.

12.4.1 The Shire of Manjimup performs five strategic roles in community safety:

- **Leadership & coordination:** Council fosters relationships with other groups and agencies and other Shire's to promote resource sharing and partnerships.
- **Strategic planning & development:** Council has an important role in understanding the changing needs of its population and strategically responding and planning for appropriate initiatives, facilities and services.
- **Service & program provision:** Council provides and manages services that respond to needs of the community. This includes basic 'traditional' Council services such as roads and waste disposal, to developing initiatives aimed at promoting safety at specific target groups.
- **Community Education & Awareness:** Education and awareness programs are important aspects in promoting safe behaviour, understanding safety issues and monitoring perceptions of safety.
- **Advocacy:** Council has an important role to play in representing the interests of the community to other levels of government responsible for the provision of services impacting on local needs and services over which the Shire of Manjimup has no control.

12.4.2 Community safety shares similar health and well being goals:

Community safety is a determinant of public health and safety principles are critical in how Council manages its assets, open public spaces, social & recreation planning, children & youth services, and developing safe public spaces and facilities. It is also important to recognise the relationship between safety and how other key Council strategic plans complement each other.

Links can be made between the *Community Safety Plan* and other critical functions of Council including, but are not limited to:

- Public health issues within the Shire of Manjimup
- Capital works & asset management
- AquaCentre management & services
- Transport & road safety
- Strategic land use
- Recreation & open space
- Early year's development & child care facilities (leases)
- Youth development programs & school holiday activity services
- Home & Community Care (HACC) & seniors services
- Community Services
- Social services & crisis accommodation services
- Risk management planning & event management support
- Youth drop-in zones & youth spaces (e.g. skate parks) within each town/community.

12.4.3 This safety plan may also be used as a tool for:

- Linking Business Units to interrelated work across the Shire organisation.
- Developing funding submissions priority projects & program implementation.
- Influencing Council policies & strategic direction.
- Incorporating community safety objectives into Shire Council reports & plans.

- Ongoing development & enhancement of open space.
- Sharing community safety knowledge with the community.

12.4.4 Manjimup Shire's ongoing roles relating to community safety:

The following table illustrates just some of the policies, service delivery and initiatives related to achieving community safety objectives:

Coordination and leadership

- Facilitating consultative meetings with internal & external stakeholders.
- Providing representation at reference group meetings.
- Liaising with key bodies on current issues.

Strategy & policy recommendation development

- Implementing strategies and policies such as: planning for the management of the Shire's built environment and infrastructure.

Service program provision

Undertake streetscape, parks and gardens enhancement works.

Provide suitable locations for recreation and sports.

Upgrade and maintain street lighting, footpaths, roads and traffic infrastructure.
Provide a graffiti removal service.

Provide a syringe/needle removal *rapid response service* by Shire cleaning staff.

Provide community services and events which minimise social isolation and build community identification.

Provide youth work services, advocating and support services to each of our youth clubs within each community/town, including promoting the *Working With Children Checks* card adopted by each community group.

Maintain and upgrade Council buildings to ensure they comply with appropriate safety standards.

Enforce state & federal regulations and local by-laws.

Deliver community health & wellbeing initiatives.

Community Safety information and awareness promotion

Promoting and maintaining community engagement in decision making.

Promoting health & well being and community safety issues within each town, small community and across the whole Shire region.

Promoting Council services and campaigns related to community safety.

Providing information on safety issues through a range of media.

Advocacy

Establishing partnerships with appropriate bodies to support community safety initiatives.

Acquire community grant funding for community safety projects & crime prevention program initiatives for each of our towns/communities.

Advocating community safety concerns to proposed plans, programs & services.

13. Community Safety & Crime Prevention Issues Raised Ongoing

The main community safety & crime prevention concerns (real or perceived) consistently raised by ongoing consultations with stakeholders are summarised below:

- Youth issues in each town (particularly outlying towns) including youth boredom, lack of facilities, all compounded by issues of isolation, limited transportation limited funding and time constraints of distances between towns.
- Speeding and dangerous driving on our roads and gravel roads.
- Antisocial behaviours of community members and visitors to the region.
- Drug & alcohol and related substance abuse issues including aggressive violence and drunken/disorderly behaviours.
- Shoplifting, damage to public property, theft in general and home break-in's.
- Responsible service of alcohol neither being promoted nor adopted within their town. Some community members perceive some conflict exists between residential areas & licensed premises precinct with associated anti-social behaviour of patrons.
- Lack of Police community presence (or response time) within their specific town or district. [Noted however, was the fact of the vast distances of land tracts each Station is expected to cover]
- Perceptions of safety being influenced by neglect of public places and increasing vandalism ('tagging' & damage) of public and private property.

Preventative, early intervention, diversionary activities and project based initiatives are each considered by the Shire of Manjimup to be key issues in addressing the *State Strategy's* number 1 Goal of: "*Supporting Families, Children & Young People*".²⁰

Council's role in community safety is a culmination of many factors that go towards instilling confidence in moving around the Manjimup Shire. The utilisation of the Shire of Manjimup *Community Safety Plan (2011-2014)* continues to capture a broader perspective on the community's issues relating to safety.

The main elements which consistently contribute to *feeling unsafe* in most of the towns within the Shire of Manjimup are drug & alcohol & substance abuse issues, dangerous driving, and anti social behaviour.

The vision for the *Community Safety Plan* is to continuously improve the community's confidence to access and participate in all types of activities and venues at all times of the day or night. Council aims to achieve this vision through changes to the environment, social support, education, partnerships and advocacy.

²⁰ Preventing Crime State Community Safety & Crime prevention Strategy (2004) Office of Crime Prevention

14. Key Result Areas – Objectives (for 2011-2014)

These actions are outlined further in the following:

OBJECTIVE 1:	Safe streets & neighbourhoods within each of our towns
OBJECTIVE 2:	Safe community behaviour & social support
OBJECTIVE 3:	Safe transport, access & movement
OBJECTIVE 4:	Community strengthening & partnerships

OBJECTIVE 1: Safer streets & neighbourhoods within each of our towns *Aim: “To maintain a Shire with a high standard of amenity in streets and public spaces that are safe, pleasant and well utilised.”*

Outcomes:

- Clean and safe environment.
- Safer design principles considered within Shire boundaries.
- Improved perceptions of community safety.

Basis:

- The physical environment affects people’s ability to participate in community activities, access services and facilities, and undertake their daily lives.
- Personal health and well being (physical and mental) is greatly enhanced by an environment that is safe, pleasant, amenable and conducive to community cohesiveness.
- Concerns about community safety may restrict people’s mobility and levels of activity and may exclude them from some places, particularly at night.
- Such concerns may affect some community members which can lead to loss of independence, isolation or constraint on some activities.
- The perception of safety can have as great an impact on people’s lives as do actual levels of safety or crime.
- Different groups may feel more vulnerable than others, making safety an important equity issue (e.g. our elderly community members).
- Creating spaces, including urban design and enhancement of buildings, and guidelines around community hubs, which encourage public surveillance and
- Increase safety, can encourage social interaction and opportunities for people to meet and participate in public life.

Indicators:

- Perceptions of community safety surveys.
- Adoption and support of *Community Safety Plan* in each town.
- Reported crime statistics.
- Safe design principles applied to public spaces, developments, major projects and plans
- Standards in street maintenance are met
- Key policy recommendations made within this plan are implemented

Street Maintenance Strategies:

- To work with infrastructure and environment to continuously improve the cleanliness and safety of public spaces.
- Continue each town's streetscape improvement plan.
- Install additional bins in specific locations within each town
- Implement actions for a Syringe Management Program which relate to installation of Sharps Disposal Units.
- Street lighting audit conducted within each town and small community within Shire.
- Investigate types of appropriate energy efficient lighting particularly in areas considered high risk of criminal activity or for the safety of the community.

Safe Public Environment Strategies:

- To work with Community Services, Design & Planning, and Environment Departments to enhance open spaces and amenities within the Shire are safe for community use.

Public Toilets

- Investigate potential sites for additional public toilets available for night use within each town and within commercial activity centre's.
- Enhance both signage and visible lighting around existing public toilets.
- Enhance disabled (ACROD) access and pathways to public toilets designed to Australian Standards specifications.

Parks (including Skate Parks)

- Enhance signage relating to emergency contacts and safe use of activities within each park
- Support recommendations contained in the Shire of Manjimup's Recreation Strategy
- Investigate the future use of night lighting to increase casual community member's capacity to use sports grounds (e.g. for walking or jogging after dark).
- Investigate; vandal resistant lighting in parks and gardens.
- Establish process for insuring adequate lighting and fire hazard areas are maintained (e.g. within the Manjimup Timber Park).

OBJECTIVE 2: Safe community behaviour & social support

Aim: “To encourage behaviour that increases people’s safety in private premises and around public spaces. To endorse appropriate social support available to those in need”

Outcomes:

- Reduction in crime.
- Reduction in injuries.
- Improved perceptions of community safety.
- Increased capacity to manage threatening situations.
- Increased awareness of strategies to prevent risks contributing to community safety.

Basis:

- This theme focuses on education, information and prevention that encourage behaviours that are safe, and reduce intentional and unintentional injury. The safety of a community generally is enhanced by the promotion of personal safety through personal choices and responsibilities.
- Injury (intentional and unintentional) in our homes, at work and school, during sport and leisure activities, on the road and in public places is a significant cause of death, illness and disability in our community.
- The harm from injury particularly affects children and older adults.
- Social support is generally regarded as programs or interventions designed to modify behaviour and create supportive social environments.
- These programs may be developed for specific groups such as youth, seniors or parents, or more broadly intended for the whole of the community.
- Behaviour and skill programs such as sports participation has been found to be effective in reducing offending behaviour (including violence) in youth aged over 16–17 years who are not at school nor participating in employment or training.²¹
- Alcohol has been associated with raised risk of injury in many settings. The links between alcohol and injuries, traffic accidents, crime and antisocial behaviour has been well established and must be recognised and interlinked within other areas of action.²²

Indicators:

- Number of activities implemented.
- Level of reported crime
- Level of numbers of injuries.
- Attendance of *Liquor Accord*²³ meetings within the Shire of Manjimup.
- Client satisfaction reports and community surveys.

²¹ Keleher H & Armstrong K, 2005 Evidence – Based Mental Health Promotion Resource, Report for the Department of Human Service, Melbourne.

²²

Ibid

²³

Liquor Accords & Local Government Reforms [Liquor & Gaming Legislation Amendment Bill] Department of Racing, Gaming & Liquor (2006).

Injury Prevention Strategies:

- To work with Community Services, Design & Planning, Environment and relevant government departments to work in conjunction with each town or community to promote safe activities and prevent personal injury.
- Aim to minimise personal injuries within Shire of Manjimup through promotion strategy (reduction in child injuries, falls, and alcohol related injuries in entertainment precincts, child sexual abuse and family violence).
- Promote walking or fitness groups for community members.
- Promotion of accessible condom vending machines / safe sex within the Shire.
- Promote community fire safety in each of our towns and smaller communities at risk of wildfire (e.g. availability of the FESA DVD info and brochure kit).

Safe entertainment precincts Strategies:

- Resurrect the local Liquor Accord in each of our towns.
- To work with Shire Planning and Community Service departments & other agencies to support initiatives which improve safety in entertainment precincts.
- Continue to promote 'Safe Service of Alcohol' programs (e.g. LDAG programs).
- Support the implementation of relevant *Youth Drop-in Zone* facilities and youth group activities within each of our towns
- Co-ordinate and ensure that all contract staff employed who work with young people hold a current 'Working With Children's Check' card issued by DCP.
- Increase understanding and support training workshops that provide information around safety issues (e.g. SDERA, RISK, Keys for Life)) and other equitable public space issues for young people (e.g. skate park development in each of our 4 towns).
- Investigate innovative ways to engage with youth and car culture (e.g. The *Manjimup PROBE Vehicle Project* for advanced P-Plate driver education & training and the *You Steer Your Life Program* for youth 'at-risk' of disengaging from the formal schooling or TAFE system).
- Investigate further innovative ways to further engage with and provide a safe venue for children under qualified adult supervision (e.g. Bands@Manjimup, Manjimup Uniting Church Youth Group, Pemberton Youth Zone, Quinninup Kids Club, Walpole Youth Crew, Northcliffe Youth Voice, and Revolution Youth, in each of our towns etc).

Anti-social & criminal behaviour Strategy:

- To work with and support Police authorities to develop strategies which prevent threatening and anti-social behaviour.
- Develop community education around family violence networks and services (promote in all Shire Council buildings/property and services) and advocate for grant funding where appropriate.
- Support and promote existing sport and recreation programs particularly aimed at youth

through the school holidays, youth activities and other recreation services (e.g. Regional AquaCentre activities or youth clubs in each town).

- Develop further youth drop-in centres & other youth specific activities (Brockman Pictures / Revolution Youth) that deter young people from just hanging around in the streets on Friday night which generally results in antisocial behaviours being reported to the Police for their response.
- Investigate options for innovative methods to address graffiti and tagging.
- Develop skate park public open spaces within each of our four towns and other youth specific Recreation Services.
- Continue to work with SARC for data on sexual assault and the links with drug & alcohol and other related issues.
- Promote services and community support agencies that exist for supporting sexual assault survivors and victims of crime. (e.g. WBEAC, SARC & Waratah).
- Support community services that promote educational programs such as Positive Parenting Program, Protective Behaviours Workshops, Youth Outreach Mentoring program, Youth Connections.

Alcohol and other drugs *Strategy*:

- To work with Community Health Services, Police and Local Drug Action Groups (LDAG) to reduce harm associated with alcohol and other drugs.
- Support groups and businesses who promote alcohol education such as the *Responsible Serving of Alcohol* courses.
- Promote services and community support agencies that exist for supporting drug users and advocate for additional agency support (e.g. Community Drug Services Team).
- Support Police and other community agencies to further investigate the impact of specific drug trends.
- Continue to implement the initiatives i.e. Leavers, *Enough* campaign, Fogarty Youth Network – LDAG, Parent Drug Information Service, and the Drug & Alcohol Office).
- Implement education and information objectives from the Shire of Manjimup's *Syringe Management Safety & Risk Management Plan* and Department of Health "Needle Supply" program (Fit Packs).
- Provide basic drug information resources on Shire council's website. (e.g. Youth specific – *Dangers of Drugs & Alcohol.*)

OBJECTIVE 3: Safe transport, access & movement

Aim: “To improve the safety around access to available safe public and private transport, on roads, pathways and bush tracks for vehicle’s, pedestrians and bicycles throughout the Shire of Manjimup”

Outcomes:

- Increased public transport use, cycling and walking in public spaces.
- Increased usage of the *Shire of Manjimup’s Community Bus* hire service by community groups, youth groups, schools, seniors groups. Core group status (seniors & youth) is available for these groups, in order to book the bus up to 12 months in advance.

Basis:

- Addressing safety concerns is fundamental to achieving the objective of increased public transport usage, walking and cycling. Current traffic conditions and distance issues make travel by car seem almost the only option to most constituents within the Manjimup Shire.
- Many families still feel unsafe with their young children travelling on public Road Coach transport, and getting to and from the town of pick-up & departure are always a problem.
- Transportation of patrons is a key safety issue for night entertainment precinct areas. Adequate provision must be made for people, especially young people to return to their homes directly after attending youth club premises, particularly in the outlying towns of Walpole, Northcliffe, Pemberton & Quinninup youth drop-in zones and sports club centre’s.

Indicators:

- Patronage of night transport options.
- Car park usage and safety (in particular after dark).
- Reported crime statistics in these specific areas.
- Perceptions of community safety survey in this area.

Strategies:

- To promote and facilitate safe cycling in the Shire.
- Continue to support promotion around secure bike storage, effective helmets and safe cycling programs for all schools within the Manjimup Shire. (e.g. promoting the SDERA program which also covers safety issues & skate parks).
- Continue to support and implement the Shire of Manjimup community bus booking system for seniors & youth groups to utilise and assist with volunteer drivers where able to.
- Continue to support Police road safety awareness through our primary schools.
- Continue to support and promote safety issues regarding drink/drug driving to community members and in all of our schools.

OBJECTIVE 4: Community strengthening & partnerships

Aim: “To work with external and internal stakeholders to maintain partnerships and coordinate initiatives that address community safety objectives”

Outcomes:

- Building community capacity to address safety issues.
- Increased participation by a diverse range of people in public life.
- Exploring the potential part time employment of a *Community Safety Coordinator* to promote and achieve policy recommendations contained within this plan.
- Assisting each of our local Police stations with community education.
- Building community capacity by the implementation of priority community safety issues & crime prevention projects developed for each of our towns.
- Increased participation and ownership of the Shire of Manjimup’s *Community Safety Plan* (2010-2013) through effective community consultation and collaboration.

Basis:

- The term ‘*community strengthening*’ refers to promoting cohesion, acceptance and engagement within the community.
- Community strengthening encourages participation and access to health, employment, social, sporting, cultural and community services opportunities.
- Participation in a range of activities provides opportunities for people to engage with others and become partners in building social life.
- Engaging people to encourage their participation is a form of social validation.²⁴
- Generally, social connections are good for communities because they uphold positive norms and values, promote participation and involvement, encourage acceptance of diversity, protect against vulnerable groups from becoming socially excluded and facilitate engagement in democratic and civic processes.²⁵
- Shire Council can add value to community strengthening through its role in facilitation and service/program provision. This includes coordinating network groups to meet together for information sharing and providing specific programs aimed at recreation and leisure, community safety and crime prevention.
- Council can also assist in community capacity building through data collection and research. The opportunity to consult with the community and collate specific data can assist in planning for future service provision and grant applications. (e.g. Community Safety Surveys and other dissemination of information).
- Support each of our local Police Station’s community education initiatives including: business security, personal safety, domestic violence, addressing anti-social behaviours and juvenile truancy.

Indicators:

- Community safety objectives incorporated across each Shire department.
- Community Safety & Crime Prevention community mapping data.
- Levels of facility usage and programs implementation.
- Safety promotion projects completed and implemented.
- Decrease in the number of school truants.
- Gain grant funding to employ part-time *Community Safety Coordinator* to promote and achieve policy recommendations contained within this plan.
- Decrease of the criminal opportunities through better security infrastructure through businesses & public places.

External Partnerships Strategy:

"To continue to strengthen relationships with key bodies in the development and implementation of community safety initiatives"

Police:

- Continue to work with local Police authorities to develop partnerships aimed at promoting community safety initiatives with business, residential and community groups.
- Develop further crime data & statistics on local and regional areas.
- Develop a local information guide for Police about youth group leaders and other supportive youth referral agencies.
- Continue to lobby State Government for sufficient local Police resources.
- Develop a communications plan to ensure the Shire of Manjimup is promoted as a safe community, within & outside the Shire region.

Community participation Strategy:

"To work with Shire Council and key community groups to become involved in community safety & crime prevention initiatives"

- Explore the potential part-time employment of a *Community Safety & Crime Prevention Coordinator* to promote and achieve policy recommendations & secure grant funding for priority issues contained within the Shire of Manjimup's Community Safety Plan.
- Investigate opportunities to revitalise the *Neighbourhood Watch*, *Eyes on the Street*, *School Watch* and *Rural Watch* and for opportunities to develop "Senior Safety Check List Security Register" for senior citizens.
- Promote services and opportunities for all people to become involved in neighbourhood and community life via targeted promotion and leisure activities based within the Shire of Manjimup (e.g. young people with youth drop-in zone activities for disengaged youth-at-risk or the PROBE vehicle - advanced driver education & training project).

24
Keleher H & Armstrong K, 2005 Evidence – Based Mental Health Promotion Resource, Report for the Department of Human Service, Melbourne.
25 Ibid

- Publicly invite more community members to interact on local community safety issues and also the *Community Safety Steering Committee*.
- Support new families to town especially those of low socio-economic background and to help them realise their full potential and to integrate them into their local community.
- Facilitate adults to be involved with young people in cross-generational work and recreational activities (e.g. the *Rock-n-Roll Age Exchange* music program Skate Park activities).
- Utilise *Community Safety Month* (October) as a promotional tool for community specific issues in conjunction with the RAC and the local CS&CP Committee.
- Continue to distribute “Shire of Manjimup Community Safety” emergency advice booklets for residents. (e.g. particularly for new community members to each town).
- Continue to progress the truancy protocol committee comprising of members from DCD, Chamber of Commerce, Police, Youth Workers, Shire, Manjimup SHS and from the District Education Office.
- Continue to approach the District Education Office and each of our Primary Schools & High Schools to consider developing constructive activities for the last days of each term.
- Continue to researching local historical road crashes involving young people (with the full endorsement of supporting families) to present relevant and thought provoking educational information to school aged youth, showing the effects of ongoing trauma of those families left behind, due to dangerous driving attitudes.

Internal partnerships and cultural change Strategy:

“To work across the organisation to raise awareness of community safety objectives in core business activities”

- Work towards consolidating community services, facilities and activities around community groups in each town working more collaboratively and strategically.
- Use *Human Impact Assessment* tool for all major policies, recommendations, programs and projects.
- Work with youth service providers and schools to explore issues around drug & alcohol abuse, bullying, ‘at-risk’ youth, road and skate park safety issues.
- To improve coordination and to work with and increase service provision hours for ‘at-risk’ youth specific services available within the Manjimup Shire (e.g. Youth Connections Program mentors, Community Drug Services Team and especially counselling services all currently operating on a limited basis).
- Raise awareness within each community on specific crime issues (e.g. Graffiti and tagging, or even child abuse and family violence for example) through the effective use of educational information in local town’s newsletters/newspapers & community information notice boards.
- Half yearly reports to the Shire’s Senior Management Team on the implementation progress of the *Shire of Manjimup’s Community Safety Plan*.

- Provide information regarding Community Safety issues on the Shire's intranet.
- Participate in research and data collection with other business units at regular intervals.
- The success of the implementation of this *Community Safety Plan* would be enhanced by the employment of a part-time officer to provide strong leadership to the CS&CP local Working Committee' and continue to conduct broad community consultation and promote activities within each of our towns, if this project is to be successful and sustainable.
- The Shire to continue to offer the support provided to the *CS&CP Working Committee* by both of the Shire's Community Development Officer and the Youth Development Officer's role and workload allocation.



Community Safety & Crime Prevention

Local Priority Action Plan

2011- 2014

March 2011 update

Introduction

As a component of the review process of the Shire of Manjimup Community Safety & Crime Prevention Plan July 2007 – June 2010 which was undertaken to investigate perceptions of community safety, the Community Safety & Crime Prevention (CSCP) Working Group conducted meetings on a regular basis throughout the year with a special committee gathering on Tuesday March 15 2011 to update the Local Priority Action Plan, 2009 – 2010 this was then followed up with a final forum workshop predominately for agency representation on Monday March 28 facilitated by Stacy Cali – Community Engagement Officer from the Office of Crime Prevention.

The aim of these meetings was to discuss, confirm and document the current issues within the many communities of the Shire and which of these issues are to be listed as priorities for the review process of the Shire of Manjimup Safety Plan.

The attached Action Plan is the result from the local Working Group, Government and non-government services representatives that attended on the days.

Four key priority areas were identified:

- 1. Alcohol and other drugs**
- 2. Road Safety**
- 3. Youth Issues**
- 4. Family Support**

The Action Plan details strategies and proposed outcomes and a contact list. Members of the CSCP Working Group will continue to meet approximately every 6/8 weeks to monitor the Action Plan priorities, promote funding opportunities and to continue to seek funding for a Regional Safety Officer to address Regional issues within the Shire of Manjimup and surrounding areas by encouraging a partnership approach amongst other Local Governments in the Warren Blackwood region.

Appendices

- SORT Analysis (Strengths, Opportunities, Aspirations, Results and Threats of the Community Safety and Crime Prevention Plan) Identified at the Community Forum March 15 & March 28 2011
- Priorities March 2011
- Stakeholder contact

Forum findings

Four key priority areas, the tables below provide details of each of these strategies and projects, and a contact person responsible for each.

- Alcohol and Other drugs
- Road Safety
- Youth Issues
- Family Support
-

Alcohol and Other Drugs

Strategies Identified	Person/Organisation Reporting/Key Stakeholders	Actions	Outcome Measures	Resources	Timeline	Evaluation Criteria
Liquor Accord	<ul style="list-style-type: none"> • (WA Police-Manjimup) 	<ul style="list-style-type: none"> • A voluntary accord with licences premises and the Police 	<ul style="list-style-type: none"> • Reduction in alcohol related incidents, hospitalisations 	<ul style="list-style-type: none"> • Community Partnerships with Local Business Chamber of Commerce 	<ul style="list-style-type: none"> • November 2012 	By June 2013 <ul style="list-style-type: none"> • No promotion of alcohol in sport • LDAG/community members have a voice on the accord • Number of licences premises signed accord. (Hotels /Football club). • Police & hospital statistics
Shire Alcohol Management Plan – (Include Drug component)	<ul style="list-style-type: none"> • Dept of Health – SW Population Health Officers • LDAG – Manjimup Coordinator • Community Drug Service Team – Bunbury 	<ul style="list-style-type: none"> • Community Forums within Shire 	<ul style="list-style-type: none"> • Reduction in alcohol related incidents, hospitalisations 	<ul style="list-style-type: none"> • Shire of Manjimup Community Officers • Community partnerships with local organisations 	<ul style="list-style-type: none"> • June 2014 	<ul style="list-style-type: none"> • By June 2013 • Promotion of the harms of misuse of alcohol consumption • LDAG / community provide input at public forums • Delivery of

	<ul style="list-style-type: none"> • School Education 			<ul style="list-style-type: none"> • SW Population Health Officers LDAG 		community forums & management plan
<ul style="list-style-type: none"> • RISK (Risk Intervention Saving Kids) 	<ul style="list-style-type: none"> • Program coordinator 	<ul style="list-style-type: none"> • Provide RISK programs for Manjimup & Pemberton students. 		<ul style="list-style-type: none"> • Community partnerships 	<ul style="list-style-type: none"> • RISK Time tabled into school curriculum - ongoing 	<p>By June 2012</p> <ul style="list-style-type: none"> • # students • # programs • Links with Manjimup Family centre for equipment and SEDERA program
Responsible Service of Alcohol Training	<ul style="list-style-type: none"> □ Manjimup Local Drug Action Group Coordinator □ Primary Health Unit Coordinator & Health Promotions Manager • Shire of Manjimup Recreation Services 	<ul style="list-style-type: none"> • Provide RSA training for Volunteer bar staff in the Shire of Manjimup 	<ul style="list-style-type: none"> • Number of RSA training workshops. • Reduction in anti social behaviour at local pubs and sporting clubs • Gained knowledge from testing • Refresher course introduction every 5 years 	<ul style="list-style-type: none"> • Community partnerships with local sporting clubs, Shire of Manjimup, Police and Community Health and Drug and Alcohol Office 	<ul style="list-style-type: none"> • Ongoing 	<ul style="list-style-type: none"> • June 2012 • # courses • Participant satisfaction

<p>Bands @ Manjimup Youth Events</p>	<ul style="list-style-type: none"> • Manjimup Family Centre program Coordinator 	<ul style="list-style-type: none"> • Promote youth concerts and mentoring youth in gaining skills on the recording studio component at the Manjimup Family Centre • Conduct Music Jam sessions for all ages 	<ul style="list-style-type: none"> • Reduction in vandalism, youth issues associated with antisocial behaviour 	<ul style="list-style-type: none"> • Bands @ Manjimup Committee • Community Partnerships • Shire of Manjimup Community Officers • Volunteers • Grants • Manjimup-Bridgetown Newspaper 	<ul style="list-style-type: none"> • Ongoing 	<ul style="list-style-type: none"> • By June 2012 • Number of events held. • Increase in young people's attendance to youth events and use of studio facility.
<p>Youth Expo</p>	<ul style="list-style-type: none"> • Youth Connections Manager • Shire of Manjimup Community Services Team & Indigenous Liaison Officer • Manjimup Volunteer Resource Centre & • Manjimup Family Centre 	<ul style="list-style-type: none"> • Develop in partnerships with other key youth services to implement Youth Expo. 	<ul style="list-style-type: none"> • (Addresses drug and alcohol, and other youth issues associated with antisocial behaviour) • Road safety awareness programs • Mental health • Resilience • Career Pathways • Volunteering 	<ul style="list-style-type: none"> • Community Partnerships • Key Youth Services – Government and non government • Grants • DOVES 	<ul style="list-style-type: none"> • March 2012 	<ul style="list-style-type: none"> • By June 2012 • Number of young people attending Youth Health Expo • Number of combined youth services partnerships established to deliver Youth Health Expo

Marketing Campaign	<ul style="list-style-type: none"> • In partnership with Manjimup Police services and the Manjimup Community Safety & Crime Working Committee 	<ul style="list-style-type: none"> • Currently OCI Manjimup Police services has a meeting with the paper weekly, which can provide opportunities to the CSCP Committee to provide stories to local media • Mail Box drops 		<ul style="list-style-type: none"> • Manjimup-Bridgetown Times Newspaper • Other Shire township monthly newsletters i.e. <ul style="list-style-type: none"> *Pemberton Newsletter *Karri Pigeon Northcliffe *Walpole Weekly <ul style="list-style-type: none"> • High school newsletters 	<ul style="list-style-type: none"> • On-going 	<p>By March 2012</p> <ul style="list-style-type: none"> • Number of media releases or stories published
School Drug Education & Road Aware	<ul style="list-style-type: none"> • Regional Consultant Project Officer • SW Community Drug Team. • SW Population Health Drug & Alcohol section 	<ul style="list-style-type: none"> • Provide projects and resources re: Alcohol and Drug awareness in Warren Blackwood schools. 	<ul style="list-style-type: none"> • Reduction in alcohol related incidents, hospitalisations 	<ul style="list-style-type: none"> • SDERA • Community Partnerships • Manjimup High School & other schools in Shire 	<ul style="list-style-type: none"> • November 2012 	<p>By March 2012</p> <ul style="list-style-type: none"> • Number of school projects delivered in the Shire • Key personnel meetings

Road Safety

Strategies Identified	Person/Organisation Reporting/Key Stakeholders	Actions	Outcome Measures	Resources	Timeline	Evaluation
PROBE	<ul style="list-style-type: none"> PROBE Management Committee 	<ul style="list-style-type: none"> Road Safety Provide driving instruction Promote PROBE Flyers to the community to raise awareness of project 	<ul style="list-style-type: none"> Increase in road safety knowledge by participants 	<ul style="list-style-type: none"> PROBE Management Committee members Grants Volunteers Community Partnerships e.g. GP's Down South 	<ul style="list-style-type: none"> September 2012 	By December 2012 <ul style="list-style-type: none"> Number of young people attending the PROBE program Evaluation of PROBE program. PROBE program promoted in local paper to increase participant usage
<ul style="list-style-type: none"> Roadwise Road Safety Working party 	Regional Manager Roadwise	<ul style="list-style-type: none"> Establish link to CSCP 		<ul style="list-style-type: none"> Roadwise Community Partnerships Grants 	June 2012	<ul style="list-style-type: none"> Police statistics

Marketing Campaign	<ul style="list-style-type: none"> • In partnership with OCI Manjimup Police services and the Manjimup Community Safety Committee 	<ul style="list-style-type: none"> • Currently OCI Manjimup Police has a meeting with the paper weekly, which can provide opportunities to the CSCP Committee to provide stories to local media 	<ul style="list-style-type: none"> • Number of media releases or stories published 	<ul style="list-style-type: none"> • As Above 	<ul style="list-style-type: none"> • As Above 	<ul style="list-style-type: none"> • As Above
--------------------	--------------------------------------------------------------------------------------------------------------------------------------------------	----------------------------------------------------------------------------------------------------------------------------------------------------------------------------------------------------------------	---------------------------------------------------------------------------------------------------	--------------------------------------------------------------	--------------------------------------------------------------	--------------------------------------------------------------

Youth Issues – (Includes Vandalism)

Strategies Identified	Person/Organisation Reporting/Key Stakeholders	Actions	Outcome Measures	Resources	Timeline	Evaluation
Keeping Kids in School	Primary Health Unit Coordinator & Health Promotions Manager	<ul style="list-style-type: none"> Develop partnership with local shop owners to sign agreement not to serve school age children, or those in uniform in school hours unless a pass has been given by their parent or school. 	<ul style="list-style-type: none"> Truancy rates (Addresses vandalism, and youth issues associated with antisocial behaviour) 	<ul style="list-style-type: none"> Community Partnerships Local Business 	<ul style="list-style-type: none"> Ongoing 	<ul style="list-style-type: none"> June 2012
Brockman Pictures	Manager Volunteer and Resource Centre Manjimup	To deliver a number of Movie Shows (Youth applicable current movies) to be presented every 4/6 weeks	<ul style="list-style-type: none"> Addresses vandalism, and youth issues associated with antisocial behaviour i.e. boredom). 	<ul style="list-style-type: none"> Manjimup Volunteer & Resource Centre Shire of Manjimup Volunteers Manjimup Repertory Club 	<ul style="list-style-type: none"> March 2012 	By June 2012 <ul style="list-style-type: none"> Number of Movie Shows in Manjimup Number of young people attending. Reduction in Police statistics in relation to anti-social behaviour and vandalism

<p>Revolution Youth Group</p> <p>Projects – Remote Youth zones</p>	<p>Pastor Revolution Youth - Shire of Manjimup</p>	<ul style="list-style-type: none"> Identify RYG projects for the Calendar Year and promote within the Shire 	<ul style="list-style-type: none"> Increase in youth participation in youth group activities. (Addresses vandalism, and youth issues associated with antisocial behaviour i.e. boredom) 	<ul style="list-style-type: none"> Promotional areas: Shire of Manjimup Library, Rec Centre, newsletters etc Lower South West Youth Network Public Notice boards. 	<ul style="list-style-type: none"> Ongoing 	<p>June 2012</p> <ul style="list-style-type: none"> Reduction in Police statistics
<p>Youth Connections</p>	<ul style="list-style-type: none"> Kathleen Bell 	<ul style="list-style-type: none"> Marginalised youth into mainstream community 	<ul style="list-style-type: none"> Provide support for youth at risk in accessing education and training to achieve goals. Provide support through diversionary activities 	<ul style="list-style-type: none"> Promotion in Shire region South West Youth Connection Network Manjimup Library Manjimup Volunteer Resource Centre 	<ul style="list-style-type: none"> On-going 	<p>By June 2012</p> <p>Number of young people in meaningful employment and participation in activities</p>

Marketing Campaign	<ul style="list-style-type: none"> In partnership with OCI David White and the Manjimup Community Safety & Crime Committee 	<ul style="list-style-type: none"> Currently OCI David White has a meeting with the paper weekly, which can provide opportunities to the CSCP Committee to provide stories to local media 	<ul style="list-style-type: none"> Reduction in crime 	<ul style="list-style-type: none"> As Above 	<ul style="list-style-type: none"> As Above 	<ul style="list-style-type: none"> Number of media releases or stories published
Crime-stoppers		<ul style="list-style-type: none"> Increase awareness of reporting associated issues relating to Alcohol misuse to the Crimestoppers number 	<ul style="list-style-type: none"> Number of reported incidents from our region to Crimestoppers if able to obtain this information from relative organisations 	<ul style="list-style-type: none"> Support from the whole of community to report 	<ul style="list-style-type: none"> Ongoing 	<ul style="list-style-type: none"> As Above

<p>CPTED (Crime Prevention Through Environmental Design)</p>	<ul style="list-style-type: none"> • Community Development Officer, Shire of Manjimup 	<ul style="list-style-type: none"> • Crime prevention through environmental design, such as lighting and designing out areas that cause problems • CCTV installation 	<ul style="list-style-type: none"> • Addresses antisocial behaviour, graffiti and other vandalism- and other crime (i.e. theft). 	<ul style="list-style-type: none"> • Community partnerships • Government and non government agencies • Grants • Office for Crime Prevention • Chamber of Commerce • Manjimup WA Police • Shire of Manjimup 	<ul style="list-style-type: none"> • June 2012 	<p>June 2012</p> <ul style="list-style-type: none"> • Manjimup CSCP member at CPTED workshop. • Attendance at Graffiti workshop • # of environmental initiatives
--------------------------------------------------------------	------------------------------------------------------------------------------------------------------	----------------------------------------------------------------------------------------------------------------------------------------------------------------------------------------------	-------------------------------------------------------------------------------------------------------------------------------------------------	---------------------------------------------------------------------------------------------------------------------------------------------------------------------------------------------------------------------------------------------------------------------------------	---------------------------------------------------------------	---------------------------------------------------------------------------------------------------------------------------------------------------------------------------------------------------

Road Safety

Strategies Identified	Person/Organisation Reporting/Key Stakeholders	Actions	Outcome Measures	Resources	Timeline	Evaluation
PROBE	<ul style="list-style-type: none"> PROBE Management Committee 	<ul style="list-style-type: none"> Road Safety Provide driving instruction Promote PROBE Flyers to the community to raise awareness of project 	<ul style="list-style-type: none"> Increase in road safety knowledge by participants 	<ul style="list-style-type: none"> PROBE Management Committee members Grants Volunteers Community Partnerships e.g. GP's Down South 	<ul style="list-style-type: none"> September 2009 	By December 2009 <ul style="list-style-type: none"> Number of young people attending the PROBE program Evaluation of PROBE program. PROBE program promoted in local paper to increase participant usage Police statistics
<ul style="list-style-type: none"> Roadwise Road Safety Working party 	<ul style="list-style-type: none"> Regional Manager Roadwise 	<ul style="list-style-type: none"> Establish link to CSCP 	<ul style="list-style-type: none"> Increase in road safety knowledge by participants 	<ul style="list-style-type: none"> Roadwise Community Partnerships Grants 	June 2012	<ul style="list-style-type: none"> Roadwise program promoted in local High School and through media outlets within Shire

Marketing Campaign	<ul style="list-style-type: none"> • In partnership with OCI David White and the Manjimup Community Safety Committee 	<ul style="list-style-type: none"> • Currently OCI David White has a meeting with the paper weekly, which can provide opportunities to the CSCP Committee to provide stories to local media 	<ul style="list-style-type: none"> • Number of media releases or stories published 	<ul style="list-style-type: none"> • As Above 	<ul style="list-style-type: none"> • As Above 	<ul style="list-style-type: none"> • As Above
--------------------	-------------------------------------------------------------------------------------------------------------------------------------	------------------------------------------------------------------------------------------------------------------------------------------------------------------------------------------------------------	---------------------------------------------------------------------------------------------------	--------------------------------------------------------------	--------------------------------------------------------------	--------------------------------------------------------------

Family Support

Strategies Identified	Person/Organisation Reporting/Key Stakeholders	Actions	Outcome Measures	Resources	Timeline	Evaluation
Crimestoppers		<ul style="list-style-type: none"> Increase awareness of reporting associated issues relating to Alcohol misuse to the Crimestoppers number As Above 	<ul style="list-style-type: none"> Number of reported incidents from our region to Crimestoppers if able to obtain this information from relative organisations 	<ul style="list-style-type: none"> Support from the whole of community to report 	<ul style="list-style-type: none"> Ongoing 	<ul style="list-style-type: none"> Increased reporting
Family Relations / Maggie Dent Support and information forums	<ul style="list-style-type: none"> Secretary DOVES (Domestic Violence Education Group) 	<ul style="list-style-type: none"> Address projects in DOVES Action Plan Develop community projects/ Family issues 	<ul style="list-style-type: none"> Reduction in Family violence incidence Manjimup Shire 	<ul style="list-style-type: none"> DOVES Management Committee Community Partnerships Grants 	<ul style="list-style-type: none"> Ongoing 	<p>By June 2010</p> <ul style="list-style-type: none"> Number of early intervention/prevention community projects. Number of participants Participant Satisfaction Reduction in WBEAC FDV statistics Reduction in VRO

Bands @ Manjimup Youth Events	<ul style="list-style-type: none"> • Manjimup Family Centre 	<ul style="list-style-type: none"> • Provide youth concerts in Manjimup 	<ul style="list-style-type: none"> • Reduction in vandalism, and youth issues associated with antisocial behaviour 	<ul style="list-style-type: none"> • Bands @ • Manjimup Committee • Community Partnerships • Shire of Manjimup Youth & Community Officers • Volunteers • Grants • Manjimup-Bridgetown Newspaper 	<ul style="list-style-type: none"> • Ongoing 	<ul style="list-style-type: none"> • By June 2010 • Number of events held. • Increase in young people's attendance to youth events. •
----------------------------------------	----------------------------------------------------------------------------	----------------------------------------------------------------------------------------	-----------------------------------------------------------------------------------------------------------------------------------	--------------------------------------------------------------------------------------------------------------------------------------------------------------------------------------------------------------------------------------------------------------------------	-------------------------------------------------------------	---------------------------------------------------------------------------------------------------------------------------------------------------------------------------------

Community Safety Crime Prevention Priorities March 2011

Group identified concerns.

- Increases in incidents of anti-social behaviour / vandalism as a direct result of alcohol and drug misuse throughout wider
- Community (youth and adults) Binge drinking culture has developed.
- Burglaries in dwellings and industrial premises
- Property damage, petty vandalism with some graffiti 'tagging' reports
- Road safety - apparent lack of concern by young people as to the consequences of drink driving and the dangers associated with speeding on sealed and unsealed roads.

Consensus of priorities & What can we do to address these issues?

1. Alcohol and Other drugs

- Youth services in Manjimup and surrounding towns - provide ongoing support for a range of activities to alleviate 'youth boredom'
- PROBE/RISK – continue to promote
- Commit to advertising message e.g. more youth don't take drugs
- Address the sport club culture of consumption of alcohol
- Re instigate Alcohol Accord and commit to Alcohol management plan for Shire
- Explore funding options through 'Proceeds of Crime' for a Community Safety Officer position

2. Road Safety

- PROBE/RISK – Driver training for youth / SDERA – Keys for Life program
- Environmental design – road design
- Road wise initiatives

3. Youth Issues /Vandalism

- Support youth services – Revolution Youth / Youth Connections / and Youth drop-in services in outer towns and support Youth Health Expo project
- Marginalised youth include in mainstream community through programs and activities
- Develop school holiday programs – youth week activities – support youth movie nights – Bands @ Manjimup
- Vandalism / graffiti – implement activities – skate park development – urban artwork murals to invite expression but not graffiti, create an area for art to be done by young people, a community wide approach, reporting to police or shire, early clean up of rubbish,

4. Family Support

- Protective behaviours - address through High School – self defence for young women – Indigenous parent safety parties
- Positive Parenting Program
- Partnership with Manjimup Family Centre in delivery of programs
- Explore funding options for on-going community forums to enhance family support programs

Contact List

Libby Winchcombe
Warren Blackwood Regional Consultant Project Officer
School Drug Education & Road Aware
Tel: 9750 2614
M: 0428 942 587

Gavan Hayllar
Regional Manager
Roadwise
E: roadwise@bunbury.wa.gov.au

Andre Foulon
Coordinator
Manjimup Family Centre
Tel: 9771 1653
E: mjpcf@westnet.com.au

David White
OCI
Manjimup Police Station
Tel: 9771 1 000
E: dave.white@police.wa.gov.au

Heather Dixon
Primary Health Unit Coordinator &
Health Promotions Manager & Local Drug Action Group member
Tel: 9777 0405
E: heather.dixon@health.wa.gov.au

Gill Knowles
Chairperson
Manjimup Crime & Safety Committee
E: gilknowles@wn.com.au

Jill Walker, Secretary,
D.O.V.E.S
Tel: 9771 7777
E: jill.walker@manjimup.wa.gov.au

RISK PROGRAM
Tracy Bremner
Tel: 9777 0300
E: tracy.bremner@health.wa.gov.au

Hayden Rice
Community Development Officer
Shire of Manjimup
Tel: 9771 7752
E: hayden.rice@manjimup.wa.gov.au

Deanna Furze
Regional Coordinator – Warren Blackwood
South West Development Commission
Tel: M: 0408 903 263
E: deanna.furze@swdc.wa.gov.au

Kelly Brand
Parenting Coordinator – Warren Blackwood
Department for Communities – Family & Children's Services
Tel: M: 0427 170 069

Rory Percival
Pastor
Revolution Youth Group
Warren Valley Community Church
Tel: 0405 602 428
E: rorybrenda@appt.net.au