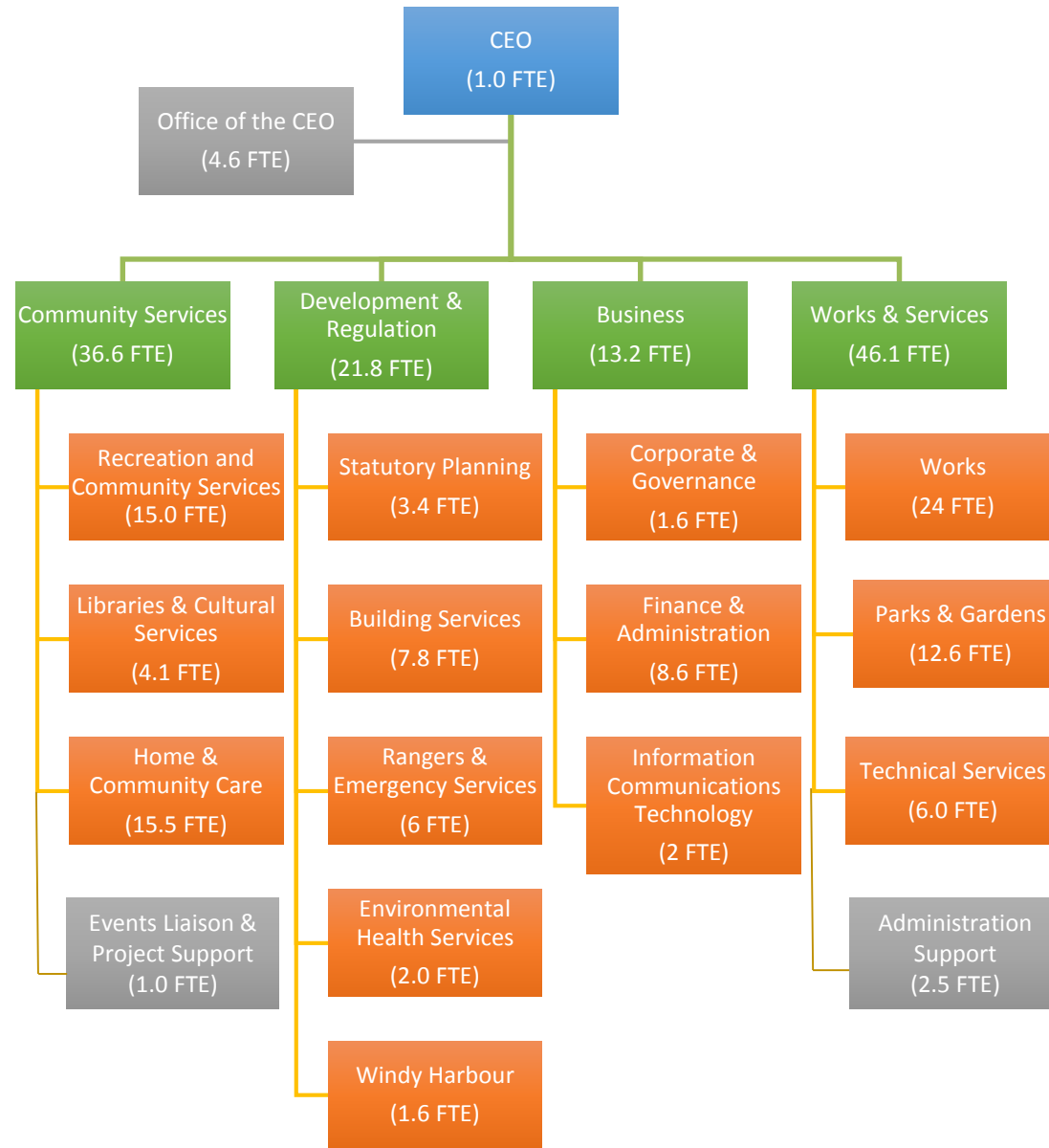




Shire Total Employees – 123.3 FTE
Grant funded – 16.9 FTE
Municipal funded – 106.4 FTE

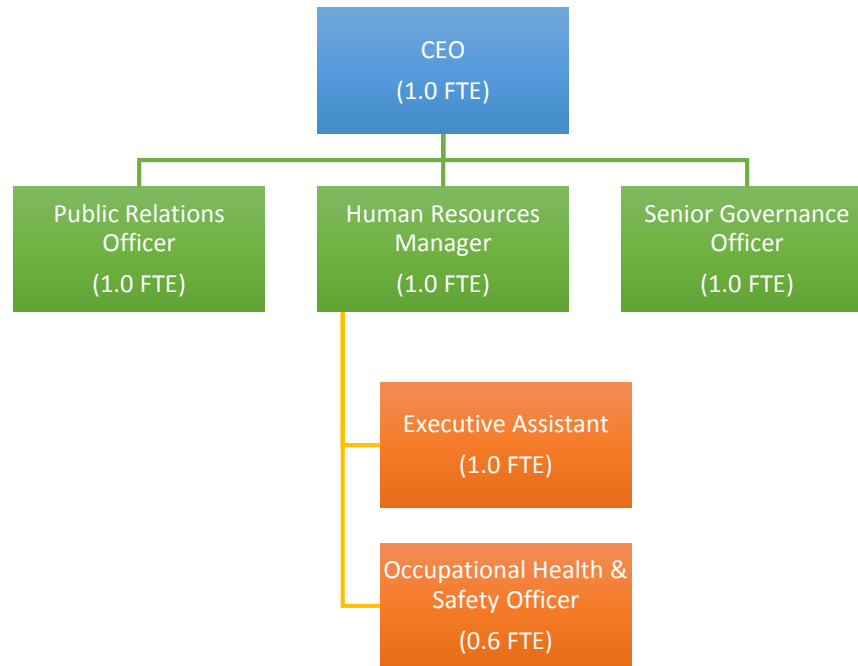
Directorates

Departments



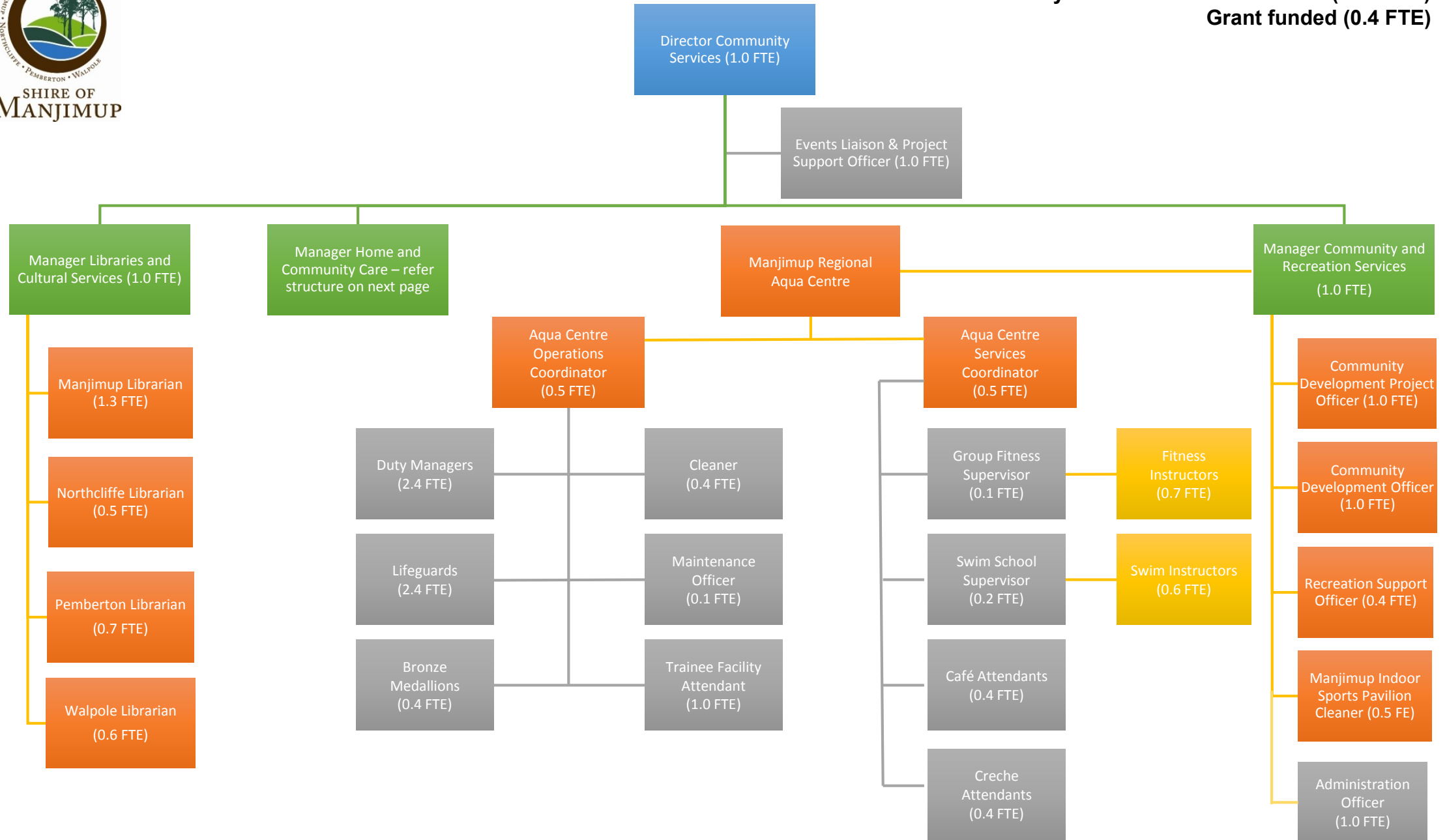


**Office of the CEO Total (5.6 FTE)
Grant funded (0 FTE)**



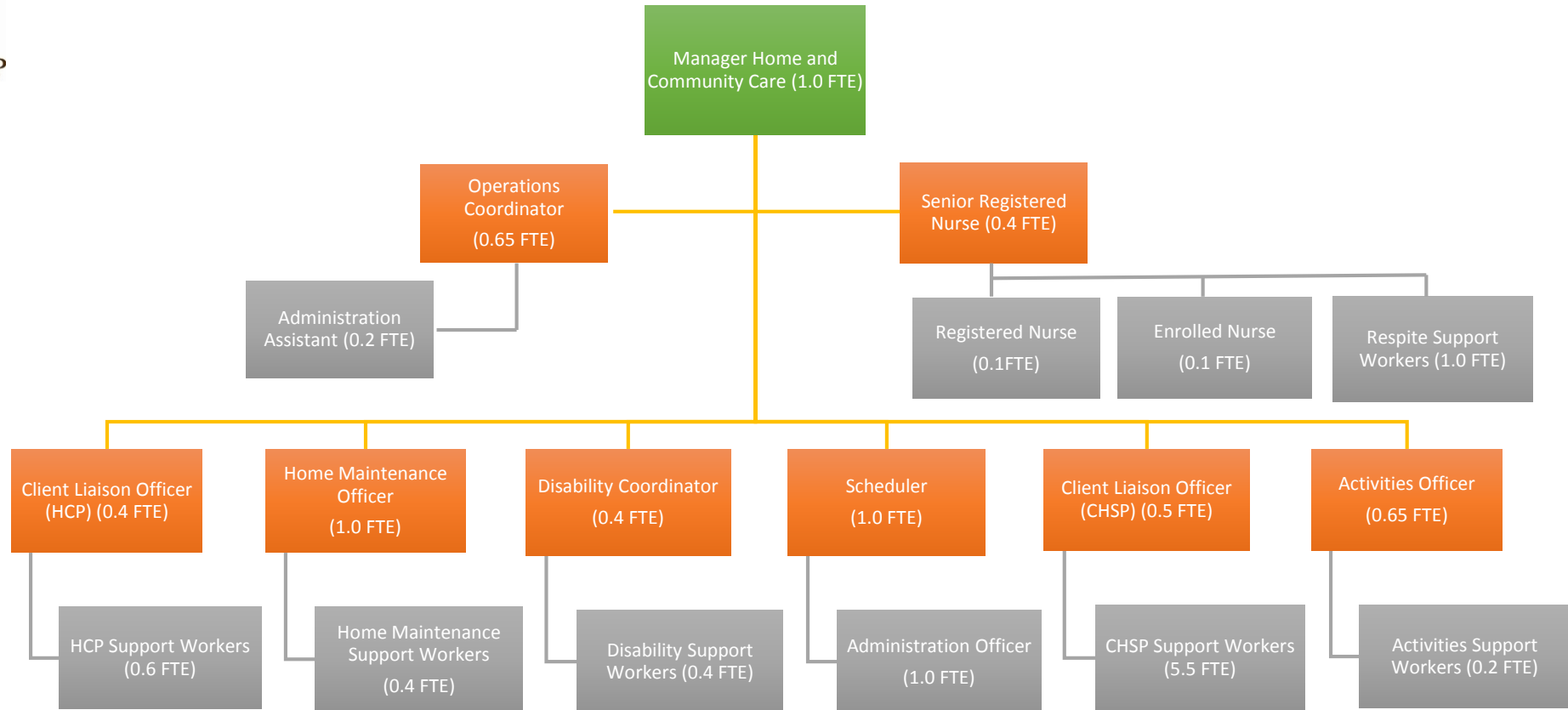


**Community Services Directorate Total (21.1 FTE)
Grant funded (0.4 FTE)**



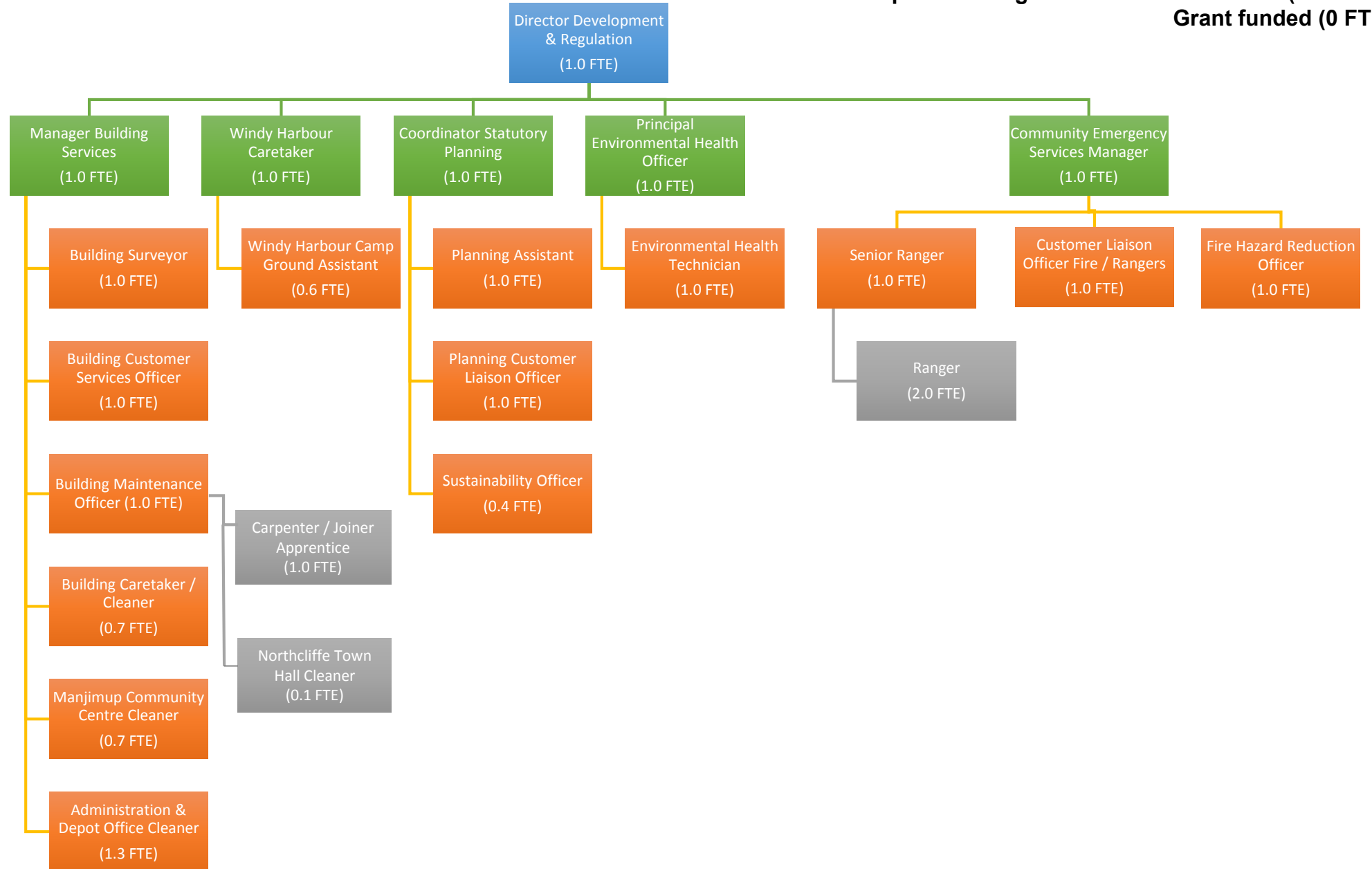


**Community Services Directorate Total (15.5 FTE)
Grant funded (15.5 FTE)**



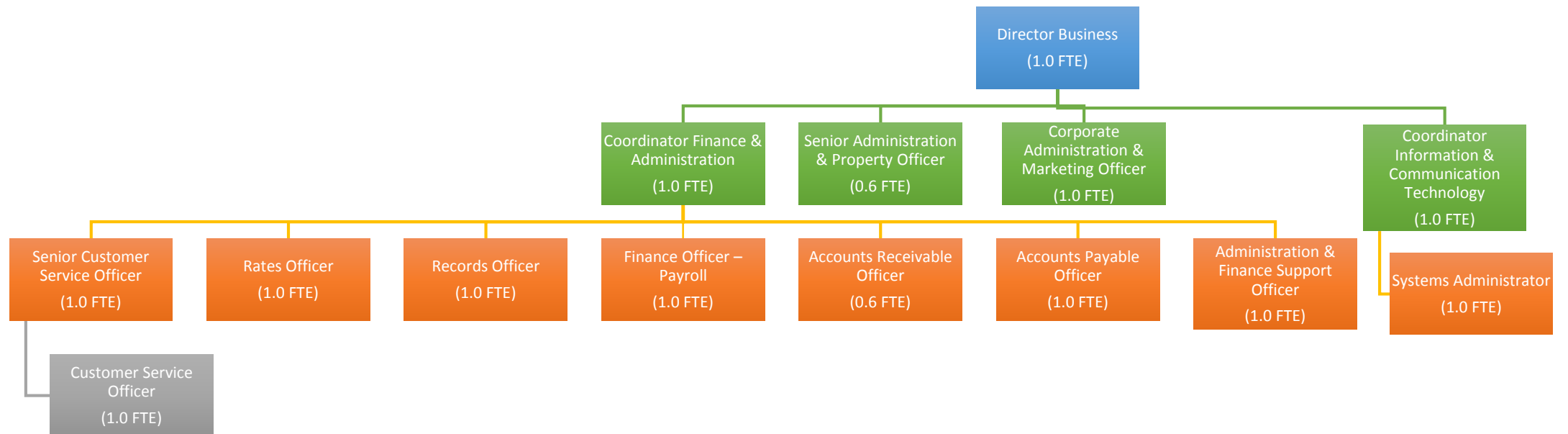


**Development & Regulation Directorate Total (21.8 FTE)
Grant funded (0 FTE)**





Business Directorate Total (13.2 FTE)
Grant funded (0 FTE)





**Works & Services Directorate (46.1 FTE)
Grant funded (1.0 FTE)**

