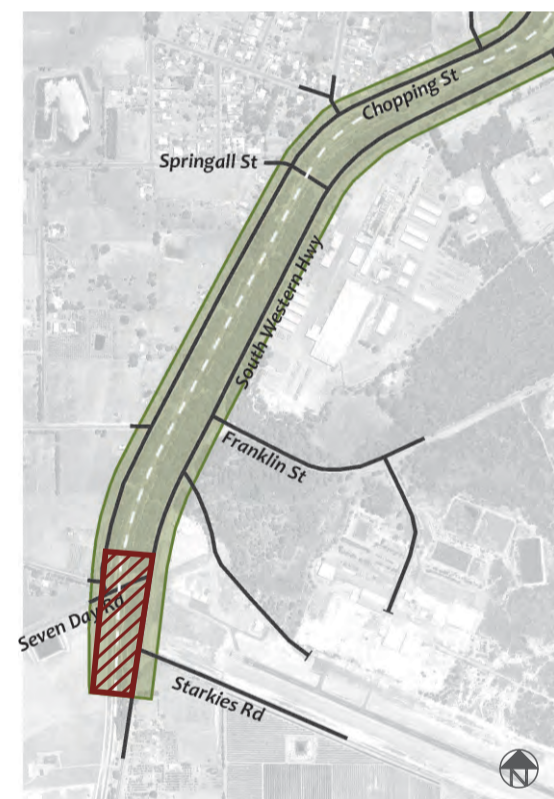
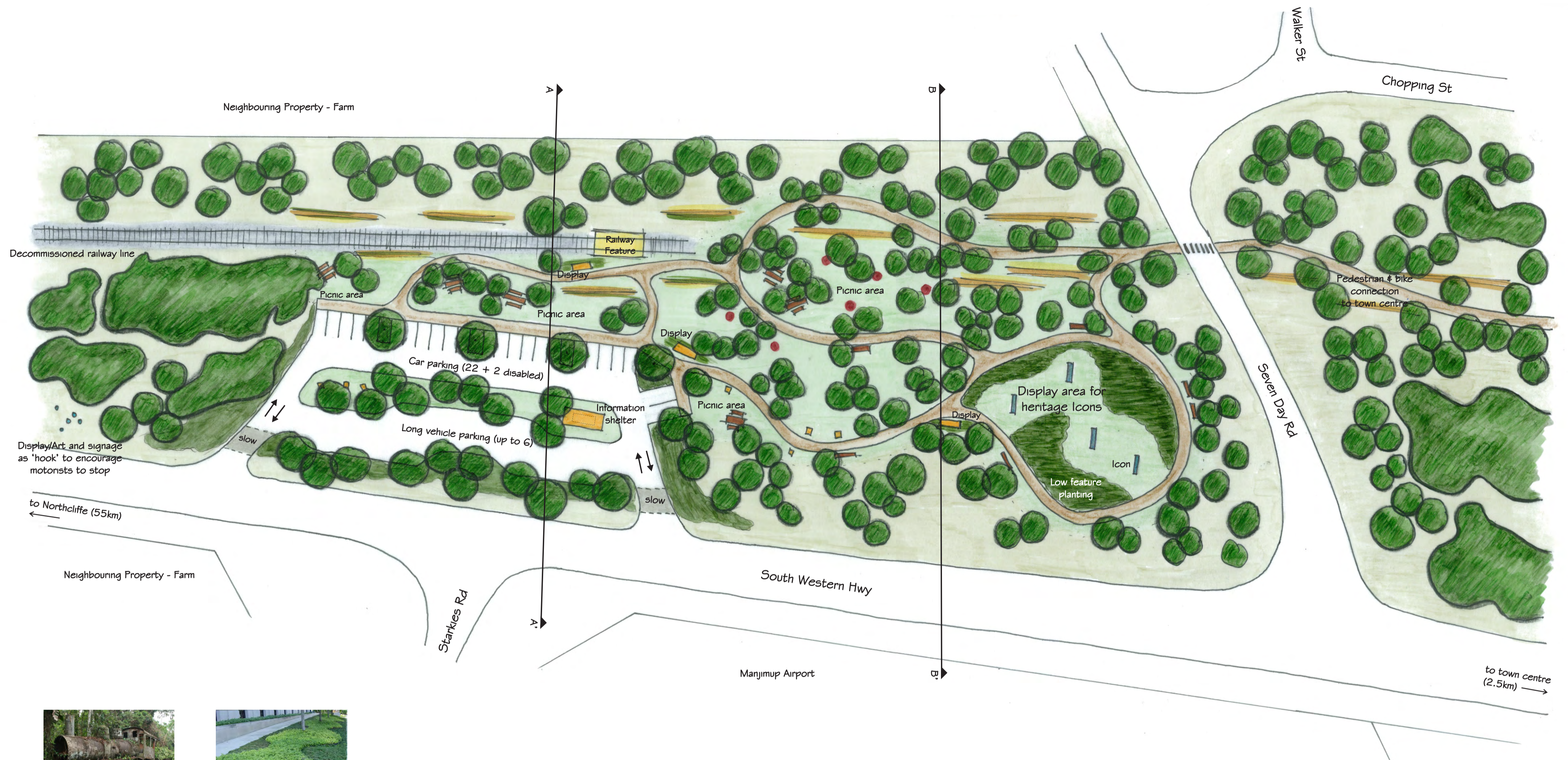


Legend

-  Proposed native trees within parkland (max height 6.0m)
-  Existing native bushland to be thinned to establish parkland character and allow views
-  Low native groundcover planting along the roads
-  Grassed area (irrigated) - highly frequented areas
-  Grassed area (non irrigated)
-  Path with hard surface for cycling, skating and walking (2.5m width)
-  Timber seating along informal path
-  Picnic area with seating and sun protection
-  Information display for directions & interpretation of Manjimup
-  Interpretation features, see Sheet 2
-  Informal play experience, see Sheet 2
-  Reused railway tracks & sleepers for bike/skate track obstacles and feature planting



Location map Sheet 6

No lighting shown on this plan as subject to electrical engineer design and approval. Western Power decorative range to be used for lighting of South Western Highway/Mottram St between the southern and northern Timber Arch.

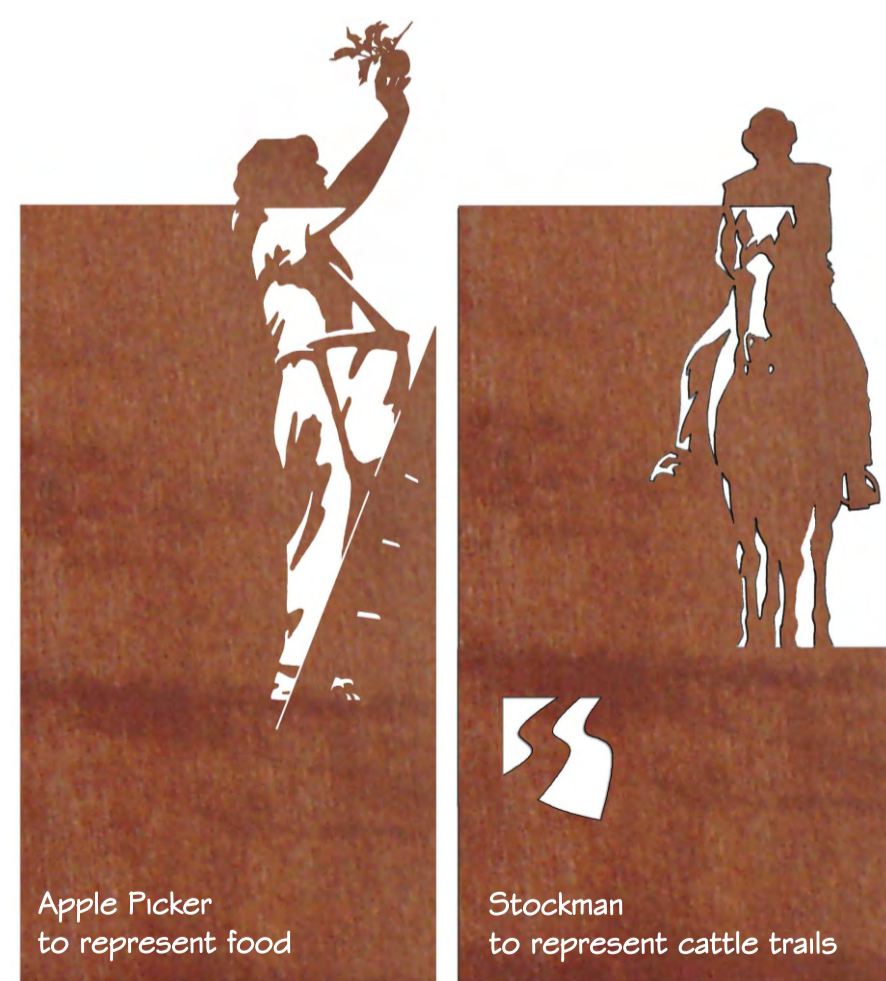
Indicative design only. To be confirmed during detailed design phase in conjunction with relevant experts.



Opportunities for Railway Feature



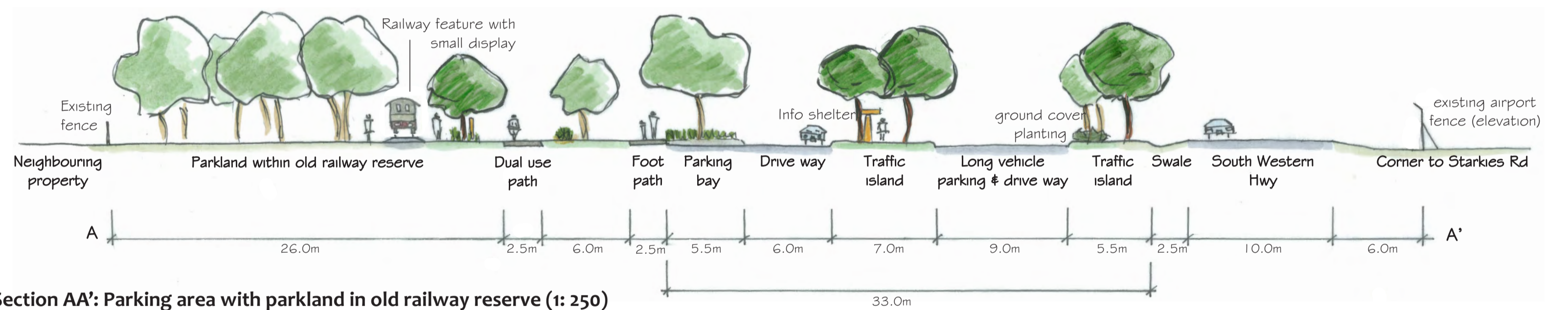
Examples of feature ground cover planting and lawn modelling



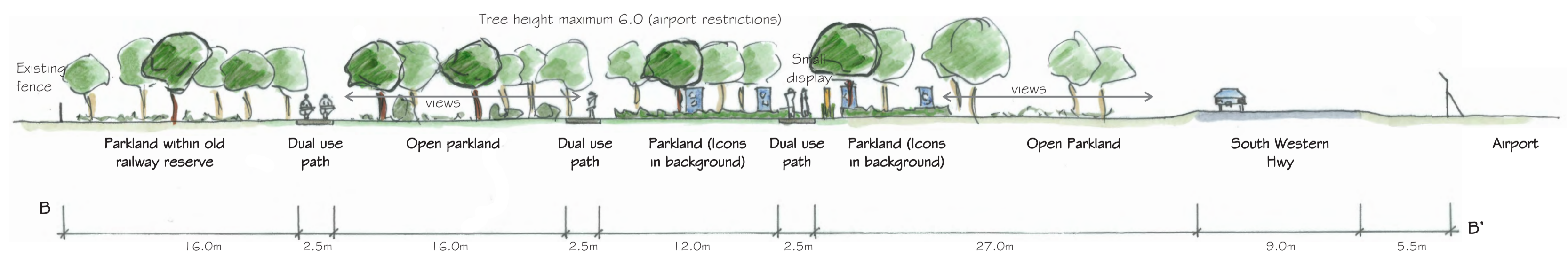
Heritage Trail Marker-Icons (Design & Drawings: Tony Windberg)

Opportunities/Design Features

- Create 'gateway' space at southern entry/exit to Manjimup
- Provide facilities for parking (including long vehicles), to rest and to learn more about Manjimup
- Create parkland landscape with high canopies (prune new and existing trees and remove understorey in existing) and to enable views to Manjimup Icons from South Western Hwy
- Groundcover planting at strategic locations to direct visitors and showcase exhibits
- Use Heritage Icons to showcase Manjimup's history, natural and cultural environment and existing features
- Railway feature indicates transition from decommissioned railway line to Linear Park
- 'Clear zone' between road seal and any landscape treatment to be minimum 3.0



Section AA': Parking area with parkland in old railway reserve (1: 250)



Section BB': Locations of Heritage Icons and surrounding parkland (1: 250)

No consultation has occurred with Statutory Approval Authorities. This is planned to occur during the Detailed Design phase of the project. All concepts are subject to change depending on the requirements of these Statutory Authorities.